



Pulltex[®]
Wine
tools
2024
www.pulltexwt.com
Branding



Organic
Origen

100 %
biodegradable



100 %
Recyclable

Reforestation is one of the most effective ways to heal the environment and effectively combat climate change. **Pulltex** collaborates with **Bosques Sostenibles** to fight to reverse this situation and bring our forests back to life.

La reforestation est l'un des moyens les plus efficaces pour valoriser notre environnement, tout en luttant efficacement contre le changement climatique. **Pulltex** collabore avec **Bosques Sostenibles** pour lutter et inverser cette tendance, en redonnant vie à nos forêts.

La riforestazione è uno dei modi più efficaci per risanare l'ambiente e combattere efficacemente il cambiamento climatico. **Pulltex** collabora con **Bosques Sostenibles** per lottare per invertire questa situazione e riportare in vita le nostre foreste.

Wiederaufforstung ist eine der wirksamsten Möglichkeiten, die Umwelt zu heilen und den Klimawandel wirksam zu bekämpfen. **Pulltex** arbeitet mit **Bosques Sostenibles** zusammen, um diese Situation umzukehren und unsere Wälder wieder zum Leben zu erwecken.

La reforestación de los bosques es uno de los recursos más eficientes de cara a sanar el medio ambiente y combatir de forma efectiva el cambio climático. Pulltex colabora con **Bosques Sostenibles** para conseguir revertir esta situación y devolverle la vida a nuestros bosques.



**Bosques
Sostenibles**

Join for the future

“With every order, you are contributing to reforestation”

“To learn more about Bosques Sostenibles, visit their website: www.bosquessostenibles.com”

COMMITTED TO  **SDS**



A lush tropical jungle scene with a waterfall and a stream. The foreground shows a stream with white water cascading over mossy rocks. The background is a dense forest of tall trees and various tropical plants, including large ferns and bromeliads. The lighting is soft and dappled, creating a vibrant green atmosphere.

Corkscrews | 2

Servers | 28

Stoppers | 40

Coolers | 50

Ice Buckets | 58

Complements | 76

corkscrew

Pulltap's the Original



Ergonomic iron handle

Ergonomic design for a powerful grip. Facilitates the alignment of your fingers.

Teflon-coated spiral

Teflon-coated surface for better durability and facilitates penetration into the cork.



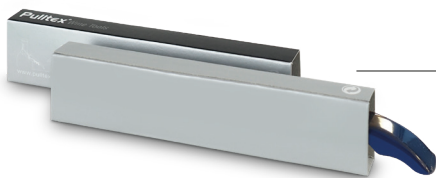
Inox micro-serrated blade

The serrated edge of the blade makes it easy to tear off the bottle cap.



Steel nickel-plated lever

Its longevity and corrosion resistance are due to the formation of a phosphate film.



Optional Packaging

Sleeve box with silver and black printing
004.850.76



Applus⁺



BUREAU VERITAS



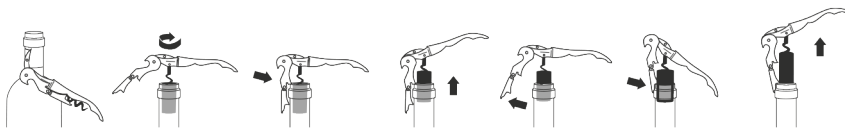
certified by AIJU

1:1 real size image



Customizable space

Laser engraving / Pad printing top area 50 x 8 mm
 Laser engraving / Pad printing side area 15 x 5 mm
 Other measures upon request



* Ral is the true colour. Pantone numbers are closest equivalences



EN The Pulltap's double lever corkscrew has revolutionized the uncorking of wine bottles. It allows pulling corks out effortlessly in two steps without breaking or damaging them. The favourite model of bar & restaurant professionals. The first original double lever in the world. Material: Painted galvanized iron handle. Steel nickel-plated lever. Teflon-coated spiral.

FR Le double levier du Tire-bouchon Pulltap's a révolutionné le débouchage. Il permet d'extraire sans effort les bouchons en deux temps, sans les tordre ni les casser. Le modèle le plus utilisé par les professionnels de la restauration. Le premier double levier au monde. Matière: Manche métal galvanisé couleur. Levier acier nickelé. Spirale téflon.

IT Il cavatappi Pulltap's a doppia leva ha rivoluzionato il modo di stappare il vino. Permette di estrarre il tappo senza sforzo in due tempi senza romperlo o danneggiarlo. E' il modello preferito e largamente usato dai professionisti della ristorazione. E' il primo e originale a doppia leva nel mondo. Materiale: Manico di ferro galvanizzato verniciato. Leva di acciaio cromato. Spirale teflonata.

DE Der doppelte Hebel des Pulltap's Korkenziehers hat das Weinentkorken revolutioniert. Die Korken können ohne Kraftaufwand in zwei Stufen gezogen werden, ohne sie dabei zu beschädigen. Das meist verwendete Korkenzieher-Modell in der Gastronomie. Der erste Original-Doppelhebel Korkenzieher in der Welt. Material: Lackierte, galvanisierte Metall-Griffschale. Vernickelter Stahlhebel. Spirale beschichtet mit Teflon.

ES La doble palanca del sacacorchos Pulltap's ha revolucionado el descorche del vino. Permite extraer sin esfuerzo los corchos en dos tiempos sin romperlos ni dañarlos. El modelo de sacacorchos más utilizado por los profesionales de la restauración. El primer y original doble palanca del mundo. Material: Mango de hierro galvanizado pintado. Palanca de acero niquelado. Espiral teflonada.



patented product
 size: 12 x 2,2 x 1,5 cm
 weight: 71 gr



corkscrew Pulltap's



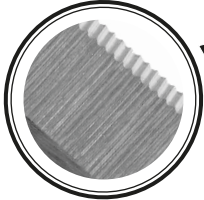
Ergonomic handle

Ergonomic design for a powerful grip. Facilitates the alignment of your fingers.



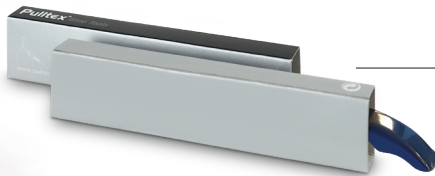
Inox handle

This material gives it great resistance to corrosion.



Inox micro-serrated blade

The serrated edge of the blade makes it easy to tear off the bottle cap.

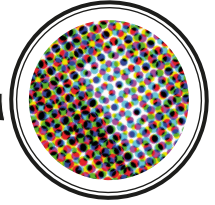


Optional Packaging

Sleeve box with silver and black printing
004.850.76

Transfer printing

Customizable all handle. 360° CMYK printing pattern.



Teflon-coated spiral

Teflon-coated surface for better durability and facilitates penetration into the cork.



Steel nickel-plated lever

Its longevity and corrosion resistance are due to the formation of a phosphate film.



WOOD EFFECT printed handle

Applus⁺



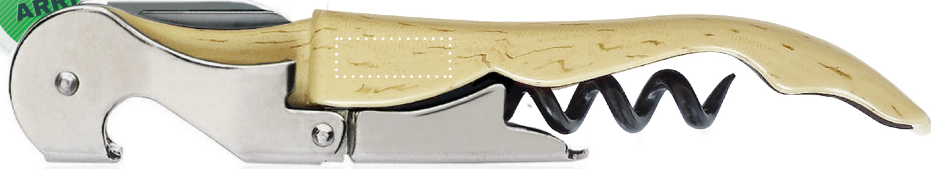
certified by AIJU

1:1 real size image



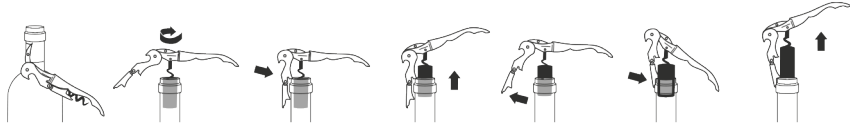
Customizable space

Laser engraving / Pad printing top area 50 x 8 mm



Customizable space

Laser engraving / Pad printing top area 50 x 8 mm
Laser engraving / Pad printing side area 15 x 5 mm
Other measures upon request



under request | ■ ■ ■ ■ CMYK
All printed image



4.806.31 | Cooper



4.806.44 | Transfer printing



4.806.21 | Inox



4.806.50 | White/Gold



4.806.64 | Transfer printing



size: 12 x 2,5 x 1,5 cm
weight: 75 gr
patented product

EN The double lever of the Pulltap's corkscrew allows pulling corks out effortlessly in two steps without breaking or damaging them. This model is widely used by bar & restaurant professionals. The wood-effect finish adds an attractive look to the corkscrew. Its entire surface can be printed with excellent photographic quality

FR Le double levier du Tire-bouchon Pulltap's a révolutionné le débouchage. Il permet d'extraire sans effort les bouchons en deux temps, sans les tordre ni les casser. Le modèle le plus utilisé par les professionnels de la restauration. Élégante finition couleur bois, pour la nouvelle référence "Wood". Ce Tire-bouchon permet également un marquage 360° pour une mise en valeur de votre communication.

IT Il cavatappi professionale Pulltap's ha rivoluzionato il modo di stappare una bottiglia di vino. E' il primo e originale cavatappi a doppia leva nel mondo. Questo modello è personalizzato con la tecnica transfer, è possibile quindi fare una personalizzazione scegliendo un disegno o una trama per colorare il cavatappi.

DE Der Doppelhebel des Pulltap's Korkenziehers erlaubt das Herausziehen von Korken mühelos in zwei Schritten herausziehen, ohne sie zu oder sie zu beschädigen. Dieses Modell wird häufig von Bar- und Restaurant Profis verwendet. Die Ausführung in Holzoptik verleiht dem Korkenzieher ein attraktives Aussehen. Seine gesamte Oberfläche kann bedruckt werden mit ausgezeichnete fotografischer Qualität.

ES La doble palanca del sacacorchos Pulltap's permite extraer sin esfuerzo los corchos en dos tiempos sin romperlos ni dañarlos. Es el modelo de sacacorchos más utilizado por los profesionales de la restauración. Su acabado en imitación de madera (transfer) transmite un atractivo sorprendente al sacacorchos. Este sacacorchos ofrece la posibilidad de ser impresa con calidad fotográfica y en la totalidad de su superficie externa.

corkscrew Pulltap's Slider



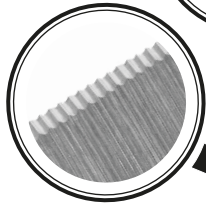
Ergonomic iron handle

Ergonomic design for a powerful grip. Facilitates the alignment of your fingers.



Sliding opening

Automatic closing system
Release the blade smoothly by pushing it forward



Inox micro-serrated blade

The serrated edge of the blade makes it easy to tear off the bottle cap.

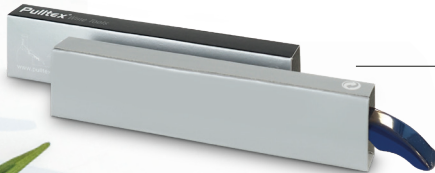
Teflon-coated spiral

Teflon-coated surface for better durability and facilitates penetration into the cork.



Steel nickel-plated lever

Its longevity and corrosion resistance are due to the formation of a phosphate film.



Optional Packaging

Sleeve box with silver and black printing
004.850.76



Applus⁺



BUREAU
VERITAS



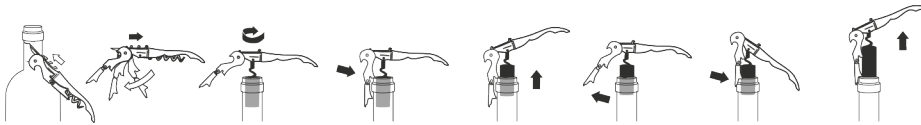
certified by
AIJU

1:1 real size image



Customizable space

Laser engraving / Pad printing top area 50 x 8 mm
 Laser engraving / Pad printing side area 15 x 5 mm
 Other measures upon request



4.808.01 | ■ Black



4.808.03 | ■ Burgundy



4.808.00 | □ White



under request | ■ ■ ■ ■ CMYK
 All printed image



EN This is the first and original double lever corkscrew with a revolutionary sliding blade. Release the blade smoothly by pushing it forward. Unfold the corkscrew to return the blade to its safety-position. Unfold the corkscrew to return the blade to its initial position. Material: painted galvanized iron handle with plastic interior, steel nickel-plated lever, and spiral made of carbon steel protected with Dupont Teflon.

FR L'original & Premier double levier au monde avec un nouveau coupe-capsule rétractile, breveté. Ouverture facile du couteau, il suffit de déplacer le curseur jusqu'au buttoir et le couteau est prêt à l'emploi. En ouvrant le double levier, le couteau se rétracte automatiquement et retrouve sa position de sécurité. Matière: Manche métal galvanisé couleur. Levier acier nickelé. Spirale téflon.

IT Il primo e originale a doppia leva nel mondo con il nuovo e rivoluzionario coltellino tagliacapsula automatico. E' sufficiente far scorrere il cursore in avanti per estrarre il coltellino, che ritorna in posizione di sicurezza aprendo la palanca. Materiale: Manico di ferro galvanizzato verniciato. Leva di acciaio cromato. Spirale teflonata.

DE Der erste Korkezieher mit Doppelhebel der Welt mit einem revolutionären automatischen Kapseln Schneider/ Messer. Um die Kapsel zu schneiden, schieben Sie die Klinge nach vorne. Beim aufklappen des Korkeziehers wird die Klinge automatisch in die sicherheitsstellung gebracht. Material: Lackierte, galvanisierte Metall-Griffschale. Vernickelter Stahlhebel. Spirale beschichtet mit Teflon.

ES El primer y original doble palanca del mundo con su nueva y revolucionaria navaja cortacapsulas automática. Desplazando su pulsador hacia la parte delantera sacaremos la navaja y al abrir la palanca ésta retorna a su posición de seguridad. Material: Mango de hierro galvanizado pintado. Palanca de acero niquelado. Espiral teflonada.



size: 12 x 2,5 x 1,5 cm
 weight: 75 gr
 patented product

corkscrew Hybrid

Cutting positioner

A fin on the handle helps guide the cut

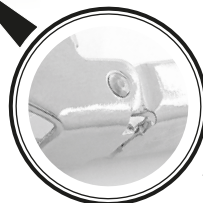
Double Cut

The curved knife that combines micro-serrated and smooth blade.



ClickCut System

Original foil cutting solution. A system of releasing the blade with only one finger.



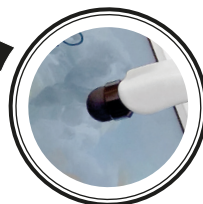
Steel nickel-plated lever

Its longevity and corrosion resistance are due to the formation of a phosphate film.



Teflon-coated spiral

Teflon-coated surface for better durability and facilitates penetration into the cork.



Plug Device

Plug for accessories such as a rubber pointer to write on electronic devices or a pen.



Optional Packaging

Sleeve box with silver and black printing
004.850.14



Applus⁺



certified by
AIJU



1:1 real size image



EN Pulltex's double-lever corkscrew incorporates all the improvements of recent years in a single corkscrew. The traditional double lever, the most ergonomic and comfortable handle, the curved and micro-serrated knife with opening with a single finger, the knife positioning fin for the guided cutting of the capsule, the Teflon-coated spiral and of course, the quality of always. ALLBLACK model with black matte finish on the lever and blade.

FR Le tire-bouchon à double levier de Pulltex bénéficie de toutes les améliorations techniques effectuées sur les différents modèles de la gamme au cours de ces dernières années. Au traditionnel double levier articulé, s'ajoute un manche plus ergonomique pour une meilleure prise en main. Incurvé, le couteau s'ouvre avec un seul doigt en un mouvement au lieu de 2. Un ergot associé à la micro denture du couteau facilite la découpe sans déchirer les capsules. Spirale téflon. Modèle ALLBLACK: une finition en noir mat pour le manche, le double levier et le couteau.

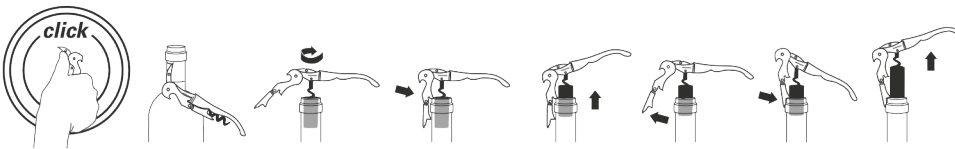
IT Il nuovo cavatappi Pulltex riunisce tutti i miglioramenti fatti negli ultimi anni in un unico cavatappi. La tradizionale doppia leva, l'impugnatura ergonomica e confortevole, il coltello curvo e microseghettato con apertura facilitata, l'aletta di posizionamento del coltello per il taglio guidato della capsula, la spirale in teflon e, naturalmente, la solita qualità. Finitura nera opaca ALLBLACK su leva e lama.

DE Der neue Pulltex-Doppelhebel korkenzieher vereint alle Verbesserungen der letzten Jahre mit einem einzigen Korkenzieher. Der traditionelle Doppelhebel, der ergonomischste und bequemste Griff, das gebogene und mikroverzehrte Messer mit einer Fingeröffnung, die Positionierflosse des Messers für das geführte Schneiden der Kapsel, die Teflonspirale und natürlich die übliche Qualität. mattschwarzes ALLBLACK-Finish an Hebel und Klinge

ES El nuevo sacacorchos de doble palanca de Pulltex añade todas las mejoras de los últimos años en un solo sacacorchos. La tradicional doble palanca, la navaja curva que combina micro-sierra y hoja lisa, abertura con un solo dedo, la aleta posicionadora del cuchillo para el corte guiado de la cápsula, la espiral teflonada y por supuesto, la calidad de siempre. Acabado ALLBLACK negro mate en la palanca y navaja.

Customizable space

Laser engraving / Pad printing top area 50 x 8 mm
Laser engraving / Pad printing side area 15 x 5 mm
Other measures upon request



4.710.00 | White



4.710.14 | Orange
Ral 2008 P166C



4.710.04 | Red
Ral3020 P180C



4.710.03 | Burgundy
Ral3005 P1817C



4.710.05 | Green
Ral6005 P3308C



4.710.02 | Blue
Ral5013 P540C



4.710.01 | Black



4.710.98 | Touch Pointer

* Ral is the true colour.
Pantone numbers are closest equivalences



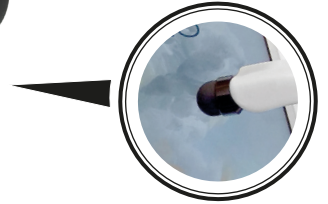
patented product
size: 12 x 2,2 x 1,5 cm
weight: 71 gr

corkscrew

Hybrid All Black

Cutting positioner

A fin on the handle helps guide the cut



Plug Device

Plug for accessories such as a rubber pointer to write on electronic devices or a pen.



Double Cut

The curved knife that combines micro serrated and smooth blade.



Teflon-coated spiral

Teflon-coated surface for better durability and facilitates penetration into the cork.



ClickCut System

Original foil cutting solution. A system of releasing the blade with only one finger.



Black Painted nickel-plated lever

Its longevity and corrosion resistance are due to the formation of a phosphate film.



Optional Packaging

Sleeve box with silver and black printing
004.850.14



Applus⁺



BUREAU VERITAS



certified by AIJU



1:1 real size image

Customizable space

Laser engraving / Pad printing top area 50 x 8 mm
 Laser engraving / Pad printing side area 15 x 5 mm
 Other measures upon request



EN Pulltex's double-lever corkscrew incorporates all the improvements of recent years in a single corkscrew. The traditional double lever, the most ergonomic and comfortable handle, the curved and micro-serrated knife with opening with a single finger, the knife positioning fin for the guided cutting of the capsule, the Teflon-coated spiral and of course, the quality of always. ALLBLACK model with black matte finish on the lever and blade.

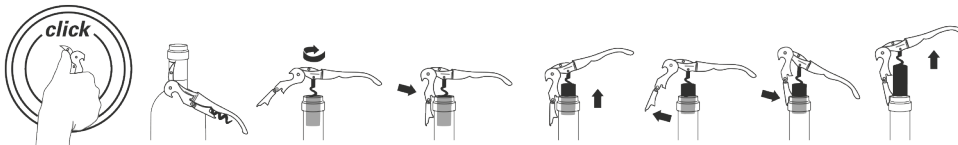
FR Le tire-bouchon à double levier de Pulltex bénéficie de toutes les améliorations techniques effectuées sur les différents modèles de la gamme au cours de ces dernières années. Au traditionnel double levier articulé, s'ajoute un manche plus ergonomique pour une meilleure prise en main. Incurvé, le couteau s'ouvre avec un seul doigt en un mouvement au lieu de 2. Un ergot associé à la micro denture du couteau facilite la découpe sans déchirer les capsules. Spirale téflon. Modèle ALLBLACK: une finition en noir mat pour le manche, le double levier et le couteau.

IT Il nuovo cavatappi Pulltex riunisce tutti i miglioramenti fatti negli ultimi anni in un unico cavatappi. La tradizionale doppia leva, l'impugnatura ergonomica e confortevole, il coltello curvo e microseghettato con apertura facilitata, l'aletta di posizionamento del coltello per il taglio guidato della capsula, la spirale in teflon e, naturalmente, la solita qualità. Finitura nera opaca ALLBLACK su leva e lama.

DE Der neue Pulltex-Doppelhebel korkenzieher vereint alle Verbesserungen der letzten Jahre mit einem einzigen Korkenzieher. Der traditionelle Doppelhebel, der ergonomischste und bequemste Griff, das gebogene und mikroverzahnte Messer mit einer Fingeröffnung, die Positionierflosse des Messers für das geführte Schneiden der Kapsel, die Teflonspirale und natürlich die übliche Qualität. mattschwarzes ALLBLACK-Finish an Hebel und Klinge

ES El nuevo sacacorchos de doble palanca de Pulltex añade todas las mejoras de los últimos años en un solo sacacorchos. La tradicional doble palanca, la navaja curva que combina micro-sierra y hoja lisa, abertura con un solo dedo, la aleta posicionadora del cuchillo para el corte guiado de la cápsula, la espiral teflonada y por supuesto, la calidad de siempre. Acabado ALLBLACK negro mate en la palanca y navaja.

patented product
 size: 12 x 2,2 x 1,5 cm
 weight: 71 gr



4.710.10 | White



4.710.20 | Wood transfer



4.710.11 | Black



4.710.13 | Red



4.710.98 | Touch Pointer



* Ral is the true colour.
 Pantone numbers are closest equivalences



corkscrew ClickCut



Teflon-coated spiral

Teflon-coated surface for better durability and facilitates penetration into the cork.



Steel nickel-plated lever

Its longevity and corrosion resistance are due to the formation of a phosphate film.



Button lever

The retractile automatic button lever facilitates the positioning of the first lever.

Cutting positioner

A fin on the handle helps guide the cut.



Inox Serrated Blade

The serrated edge of the blade makes it easy to tear off the bottle cap.



ClickCut System

Original foil cutting solution. A system of releasing the blade with only one finger.

Optional Packaging

Sleeve box with silver and black printing 004.850.50



Applus⁺



BUREAU VERITAS



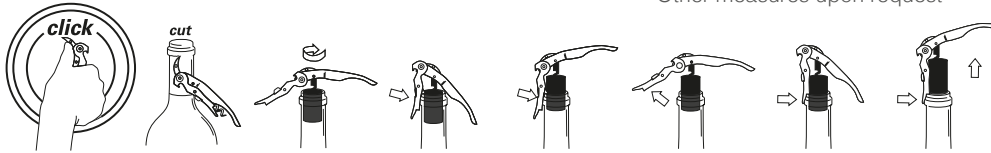
certified by AIJU

1:1 real size image



Customizable space

Laser engraving / Pad printing top area 50 x 8 mm
 Laser engraving / Pad printing side area 25 x 9 mm
 Other measures upon request



* Ral is the true colour.
 Pantone numbers are closest equivalences

EN ClickCut offers the famous patented double-lever uncorking system. It allows pulling even the longest corks out effortlessly. Furthermore, it provides a new original foil cutting solution. A new patented system of releasing the blade with only one click. An efficient, easy and safe way. A true revolution much appreciated by bar & restaurant professionals, as well as by anyone who regularly uses our corkscrews.

FR Des innovations et des améliorations techniques au service des professionnels du vin : il est plus ergonomique pour une meilleure prise en main et plus facile d'utilisation grâce à un couteau breveté qui s'ouvre avec un seul doigt en 1 mouvement au lieu de 2. Son double levier rétractile et breveté facilite l'extraction de tous les types de bouchons, ses lignes épurées lui donnent un aspect plus moderne..

IT Il cavatappi ClickCut ha una doppia leva retrattile brevettata che permette di estrarre il tappo senza sforzo in due tempi, senza romperlo o danneggiarlo e in modo completamente verticale. Inoltre, il nuovo sistema brevettato permette di aprire la lama con una sola mano con un solo movimento in maniera più facile, veloce e sicura. Una vera rivoluzione per tagliare la capsula e facilitare il lavoro dei professionisti.

DE ClickCut bietet das berühmte patentierte Doppel-Hebel-Entkorkung System. Damit lassen sich selbst die längsten Korke mühelos herauszuziehen. Außerdem bietet es eine neue originelle Lösung zum Schneiden der Folie. Ein neues patentiertes System zum Lösen der Klinge mit nur einem Klick. Eine effiziente, einfache und sichere Methode. Eine echte Revolution, die geschätzt von Bar- und Restaurant Restaurantfachleuten sowie von allen die unsere Korkezieher regelmäßig benutzen.

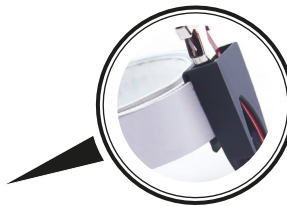
ES El sacacorchos clickCut mantiene el sistema de doble palanca retráctil patentado para la extracción vertical y sin esfuerzos de los tapones más largos. Incorpora un nuevo sistema patentado de despliegue de la navaja con un solo dedo en un solo movimiento, de manera rápida, fácil y segura. Una verdadera revolución para abrir las cápsulas del vino y facilitar el trabajo de los profesionales de la hostelería y otros usuarios habituales de nuestro sacacorchos. Una vez lo pruebe no volverá a cambiar de sacacorchos.



size: 12 x 2,9 x 1,5 cm
 weight: 75 gr

Belt Clip

Adaptable clip to ensure the corkscrew to the belt.



Customizable space

print area 25 x 20 mm
 Other measures upon request

size: 7,6 x 4 x 2,5 cm
 weight: 20 gr



Plastic Body

Black polyamide plastic.
 High resistance.

4.894.00 | ■ Pure Black



corkscrew ClickCut

Chrome Ergonomic handle

Ergonomic design. Chrome Electroplating Provide resistance against corrosion.



Teflon-coated spiral

Teflon-coated surface for better durability and facilitates penetration into the cork.



Cutting positioner

A fin on the handle helps guide the cut.



Inox Serrated Blade

The serrated edge of the blade makes it easy to tear off the bottle cap.



Steel nickel-plated lever

Its longevity and corrosion resistance are due to the formation of a phosphate film.



ClickCut System

Original foil cutting solution. A system of releasing the blade with only one finger.



Button lever

The retractile automatic button lever facilitates the positioning of the first lever.



Optional Packaging

Sleeve box with silver and black printing
004.850.50

1:1 real size image



Applus⁺



certified by
AIJU

4.915.04 | Chrome

Customizable space

Laser engraving / Pad printing top area 50 x 8 mm
Laser engraving / Pad printing side area 25 x 9 mm
Other measures upon request



4.915.30 | ■ Cooper



4.915.22 | ■ Gold



4.915.23 | ■ Carbon transfer



4.915.40 | ■ Wood transfer



4.915.18 | ■ Left Handed

Under request
(Standard in Black Corkscrew)



EN The ClickCut corkscrew has been awarded with the 1st Prize at the Gevrey-Chambertin corkscrews contest in France. Its retractable double lever allows pulling the corks out effortlessly in two steps, without breaking or damaging them and in a completely vertical way. It has been proven to work with all kinds of corks, even the longest ones. Patented retractable double lever system.

FR Le ClickCut a obtenu le 1er Prix au concours du Tire-bouchon à Gevrey-Chambertin. Son système de double levier rétractile permet d'extraire sans effort les bouchons en deux temps, sans les tordre ni les casser. Très efficace pour tout type de bouchons. Système de double levier rétractile,

Il cavatappi ClickCut ha vinto il primo premio del concorso Gevrey-Chambertin in Francia come "miglior cavatappi". Ha una doppia leva retrattile che permette di estrarre il tappo senza sforzo in due tempi, senza romperlo o danneggiarlo e in modo completamente verticale. La sua funzionalità è dimostrata per tutti i tipi di tappi, anche i più lunghi. Sistema a doppia leva retrattile brevettata.

DE ClickCut hat den 1. Preis beim Korkezieher-Wettbewerb von Gevrey-Chambertin in Frankreich gewonnen. Durch sein einklappbares 2-Stufen-Hebelsystem lassen sich Korke ohne Kraftaufwand völlig vertikal in 2 Stufen ziehen, ohne sie dabei zu beschädigen. Erwiesene Effizienz für alle Arten von Verschlüssen, auch für extra lange Verschlüsse. Patentiertes versenkbares Doppelhebel-System.

ES El ClickCut ha obtenido el 1er Premio del concurso de sacacorchos de Gevrey-Chambertin en Francia. Su sistema de doble palanca retráctil permite extraer sin esfuerzo los tapones en dos tiempos, sin romperlos ni dañarlos, de forma totalmente vertical. Total eficacia demostrada para todo tipo de tapones, incluso los más largos. Sistema de doble palanca retráctil patentado.



size: 12 x 2,9 x 1,5 cm
weight: 75 gr

corkscrew Quadratt



Dual blade

Micro-serrated blade and clean edge blade. Choose the perfection



Hidden blade

Easy finger operated for use and later storage

Steel nickel-plated Black lever

Its longevity and corrosion resistance are due to the formation of a phosphate film.



Teflon-coated spiral

Teflon-coated surface for better durability and facilitates penetration into the cork.



Arplus⁺



certified by AIJU

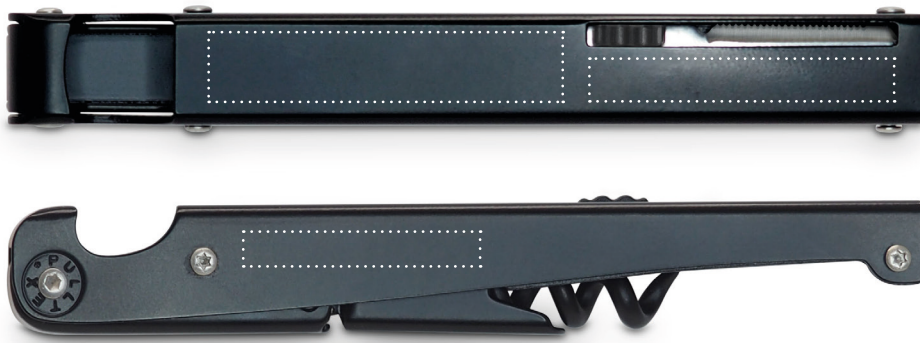


Optional Packaging

Cardboard box with silver and black printing
004.850.09

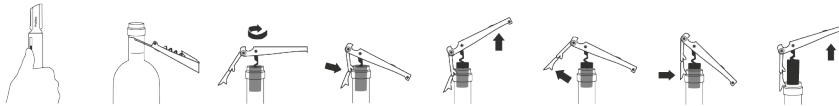


1:1 real size image



Customizable space

Laser engraving / Pad printing top area A 45 x 10 mm / B 40 x 6 mm
Laser engraving / Pad printing side area 30 x 5 mm
Other measures upon request



7.199.02 | White



7.199.01 | Black



EN Quadratt corkscrew is a new version of the double lever corkscrew with a compact and lightweight design with clean lines. It incorporates a straight blade with a smooth side and a serrated area also for the perfect cut of any capsule. Made of quality stainless steel. It allows the corks to be extracted effortlessly in two stages without breaking or damaging it due to the spiral covered in Teflon.

FR Le modèle QUADRATT : le nouveau tire-bouchon à double levier se caractérise par un design compact tout en étant léger avec des lignes épurées. Il intègre un couteau droit avec une partie lisse et une autre micro dentelée pour assurer une découpe parfaite quelle que soit la capsule. Fabriqué en acier inoxydable de haute qualité, il permet d'extraire les bouchons en 2 temps sans effort, en évitant de les tordre et de les casser, grâce à son système de double levier. Spirale en téflon.

IT Il cavatappi Quadratt è una rivisitazione del cavatappi a doppia leva dal design compatto e leggero, e dalle linee pulite. Incorpora una lama completamente dritta con un lato liscio e l'altro microseghettato per il taglio perfetto di qualsiasi capsula. Realizzato in acciaio inossidabile di alta qualità. Permette di estrarre i tappi senza sforzo in due fasi senza romperli o danneggiarli grazie alla sua spirale in teflon.

DE Quadratt Korkenzieher ist eine neue Version des Doppelhebel-Korkenziehers mit einem kompakten und leichten Design mit klaren Linien. Der Korkenzieher verfügt über eine gerade Klinge mit einer glatten Seite und einem gezackten Bereich für den perfekten Schnitt jeder Kapsel. Hergestellt aus hochwertigem Edelstahl.

ES El sacacorchos Quadratt es una revisión del sacacorchos de doble palanca con un diseño compacto y ligero de líneas puras. Incorpora una navaja totalmente recta con un lado liso y el otro con sierra dentada para el corte perfecto de cualquier cápsula. Fabricado en acero inoxidable de alta calidad. Permite la extracción de los corchos en dos tiempos sin romperlos ni dañarlos gracias a su espiral teflonada



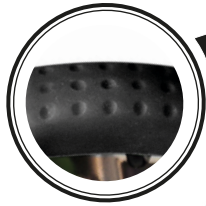
patented product
size: 12 x 1,4 x 1,8 cm
weight: 70 gr

2F corkscrew two functions



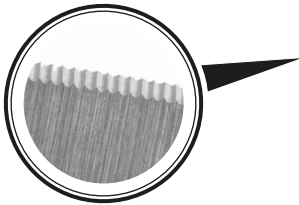
Ergonomic silicone handle

Ergonomic design for a powerful grip. Facilitates the alignment of your fingers.



Inox micro-serrated blade

The serrated edge of the blade makes it easy to tear off the bottle cap.



Teflon-coated spiral

Teflon-coated surface for better durability and facilitates penetration into the cork.



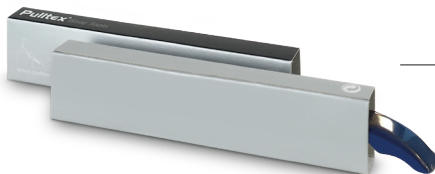
Steel nickel-plated lever

Its teeth allow you to grip the champagne stopper with maximum security



Optional Packaging

Sleeve box with silver and black printing
004.850.76



1:1 real size image



4.801.01 | ■ Black

Customizable space

Laser engraving / Pad printing top area 40 x 8 mm
Other measures upon request

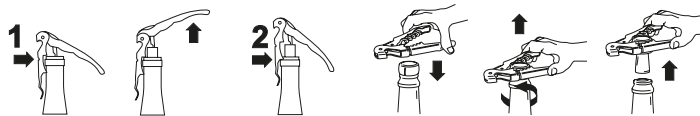


4.801.02 | ■ Mat Gold

Customizable space

size: 12 x 2,2 x 1,5 cm
weight: 71 gr

Laser engraving / Pad printing top area 50 x 8 mm
Laser engraving / Pad printing side area 15 x 5 mm
Other measures upon request



EN The Pulltap's corkscrew double lever has revolutionized the uncorking of the wine. It allows pulling corks out effortlessly in two steps without breaking or damaging them. Now, thanks to its toothed lever, it allows you to extract the cork from sparkling bottles effortlessly.

FR Le double levier du Tire-bouchon Pulltap's a révolutionné le débouchage. Il permet d'extraire sans effort les bouchons en deux temps, sans les tordre ni les casser. Désormais, grâce à son levier denté, il permet d'extraire le bouchon des bouteilles pétillantes sans effort.

IT Il cavatappi Pulltap's a doppia leva ha rivoluzionato il modo di stappare le bottiglie. Permette di estrarre il tappo senza sforzo in due tempi, senza romperlo o danneggiarlo. Ora, grazie alla sua leva dentata, permette di estrarre il tappo dalle bottiglie frizzanti senza fatica.

DE Der Pulltap's Korkenzieher revolutioniert dank seiner Zweistufen-Hebeltechnik das Entkorken von Weinflaschen ohne den Korke zu beschädigen oder zu brechen. Dank seines gezahnten Hebels können Sie jetzt mühelos den Korke aus Sektflaschen ziehen.

ES La doble palanca del sacacorchos Pulltap's ha revolucionado el descorche. Permite extraer sin esfuerzo los corchos en dos tiempos sin romperlos ni dañarlos. Ahora gracias a su palanca dentada permite extraer el corcho de las botellas de espumosos sin esfuerzo.

size: 12 x 2,5 x 1,5 cm
weight: 75 gr
patented product

Arplus[®]



BUREAU VERITAS



certified by AIJU

packaging

Customized



From Design
to Product



100 % corporative



Adapted to your bussines

Corkscrew Sleeve / Cardboard personalized

- 4.850.76 | BASIC & 2F model Cardboard
- 4.850.50 | CLIKCUT model Cardboard
- 4.850.14 | HYBRID model Cardboard
- 4.850.09 | QUADRATT model Cardboard

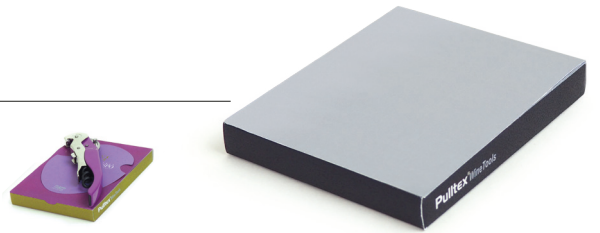
size: 12 x 2,5 x 1,3 cm
weight: 3 gr



Set Box / Corkscrew + ni:gota

- 4.869.00 | Silver Standard

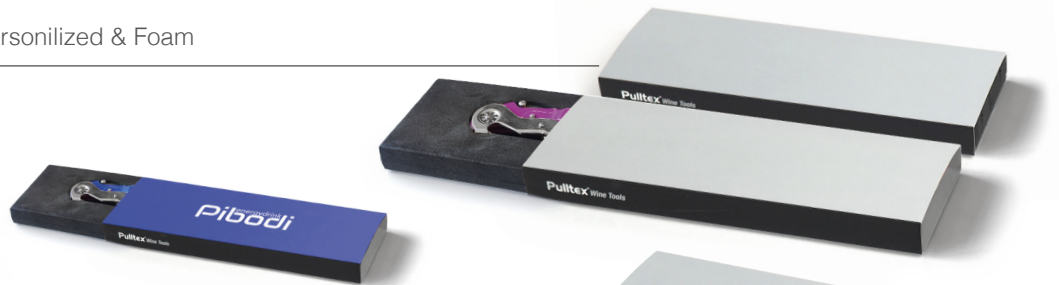
size: 10,5 x 8,2 x 1,3 cm
weight: 12 gr



Foam Boxes / Cardboard personalized & Foam

- 4.860.00 | Silver Foam Box

size: 18 x 6,2 x 1,6 cm
weight: 25 gr



Wine Box / Corkscrew, silicone stopper & ni:gota

- 4.861.00 | Silver Foam 3pcs. Set

size: 18 x 12,3 x 2,1 cm
weight: 45 gr



Personalized Boxes / Cardboard personalized

- 7.100.00 | Silver Carton Box

size: 16 x 6,5 x 2 cm
weight: 22 gr



Optional Boxes / Metal box

- 107.514.00 | Silver Metal Box

size: 15,5 x 7,5 x 2,2 cm
weight: 75 gr



Premium Products Customized



Other catalogue with more than 200 premium articles available



9.170.00

9.171.00



4.910.00

4.911.00

Magnetic Closure

Magnet closure integrated in the wood

All Corkscrews available

EN Wood box with interior in high density foam, fit all Pulltex corkscrews.

FR Boîte en bois avec intérieur en mousse haute densité, admet tous les tire-bouchons de la collection Pulltex.

IT Scatola in legno con interno in schiuma ad alta densità, è adatto a tutti i cavatappi della gamma Pulltex.

DE Holzkasten mit Innenraum aus hochdichtem Schaumstoff, lässt alle Korkenzieher Pulltex zu.

ES Caja de madera con interior en foam de alta densidad, admite todos los sacacorchos Pulltex.

size: 18 x 11,6 x 4,5 cm
weight: 310 gr

size: 18 x 7 x 3,2 cm
weight: 160 gr



4.208.00 |  Wood Box

4.207.00 |  Wood Box Mini

All Corkscrews available



— HAND MADE —

7.007.01



7.007.04



7.007.05

7.007.00

9.143.00



EN We also have a wide range of premium items for the most special gifts. Consult our commercial team.

FR Nous avons également une large gamme d'articles premium pour les cadeaux spécifiques. Consultez notre équipe commerciale.

IT Abbiamo anche una vasta gamma di articoli premium per i regali più speciali. Consultare il nostro team commerciale.

DE Wir haben auch eine große Auswahl an Premiumartikeln für die besonderen Geschenke. Wenden Sie sich an unser Verkaufsteam.

ES También disponemos de una gran gama de artículos premium para los obsequios más especiales. Consulte a nuestro equipo comercial.

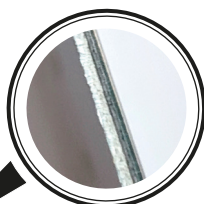
Exclusive high quality products for your brand

request our gift collection products for your special promotions on:

www.pulltex.com

Bimaterial

Iron and aluminium laminated



available for Pulltap's Classic, Toledo & Cordoba Models



Magnetic Closure

Magnet closure integrated in the wood

EN The base made of alder wood from the forests in Europe with an aluminium cap with an iron layer to be closed by two magnets placed in the wood. This packaging is only available for our premium corkscrews.

FR Pour vos cadeaux PREMIUM. Base en bois d'aulne issu de la sylviculture des forêts européennes. Deux aimants incorporés dans le bois permettent de fixer la plaque en aluminium sur le socle. Cet emballage est uniquement disponible pour nos tire-bouchons premium.

IT Base realizzata in legno di ontano proveniente dalle foreste europee, con coperchio in alluminio richiudibile grazie ai due magneti presenti. Questa confezione è disponibile solo per i nostri cavatappi Premium.

DE Der Sockel besteht aus Erlenholz aus den Wäldern Europas mit einer Aluminiumkappe mit einer Eisenschicht, die durch zwei im Holz platzierte Magnete verschlossen wird. Diese Verpackung ist nur für unsere Premium-Korkenzieher erhältlich.

ES Base de madera de aliso de silvicultura de bosques europeos con una tapa de aluminio con capa de hierro para que se cierre mediante dos imanes colocados en la madera. Esta packaging solo está disponible para nuestros sacacorchos premium.



107.517 |  Luxe Aluminium Wooden Box

size: 14,5 x 5,8 x 2,5 cm
weight: 130 gr

Premium Products Customized



Pulltex®
wine concepts for wine lovers
experience

107.850.00



107.840.00



Corkscrew Pouches



EN Corkscrew holder for belt. It can accommodate any of our corkscrews.

FR Etui tire-bouchon pour ceinture. Il peut accueillir tous nos modèles de tire-bouchons.

IT Porta cavatappi per cintura. È adatto per tutti i cavatappi della gamma.

DE Korkenzieherhalter für Gürtel. Es kann jeden unserer Korkenzieher aufnehmen.

ES Porta sacacorchos para cinturón. Puede alojar cualquiera de nuestros sacacorchos.

Laser engraving customization.



Imitation Leather Case

Available in brown and black finish.

Leather Case
4.862.00 | ■ Brown
4.863.00 | ■ Black
size: 15 x 5 x 1cm
weight: 20 gr



Imitation Leather Case
7.200.01 | ■ Brown
7.200.00 | ■ Black
size: 13 x 4 x 3,5 cm
weight: 20 gr



Imitation Leather Case
4.857.00 | ■ Brown
4.858.00 | ■ Black
size: 14,5 x 5 x 0,5 cm
weight: 21 gr

Leather Case

Available in brown and black finish.



Imitation Leather Case

Available in brown and black finish.





Cork Puller

EN With the new Cork Puller from Pulltex even the most delicate corks could be extracted smoothly without damaging them.

FR Tire bouchon bilame pour extraire les bouchons les plus délicats sans les abîmer.

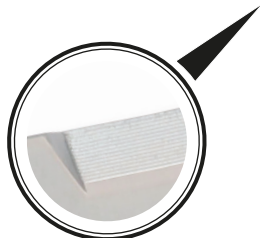
IT E' il cavatappi ideale per aprire i tappi più delicati di bottiglie di vino storiche, senza danneggiarli. L'utilizzo di questo cavatappi è molto semplice: entrambe le lame vanno infilate tra il tappo e la superficie interna del collo della bottiglia. Prima va inserita la lama più lunga e poi quella più corta. Poi avvalendosi dell'impugnatura, il tappo andrà estratto tirando e ruotando contemporaneamente.

DE Mit dem neuen Cork Puller von Pulltex können Sie sogar die empfindlichsten Korken ohne sie zu beschädigen herausziehen.

ES Sacacorchos de lamas para extraer los corchos más delicados sin dañarlos. El sistema es muy sencillo, basta deslizar las lamas alrededor del corcho con un ligero movimiento de vaiven y luego tirar de el rotando al mismo tiempo.



size: 6,5 x 11,2 x 1 cm
weight: 70 gr
Material: Iron / ABS



Bottle Opener

Specially designed for crown caps



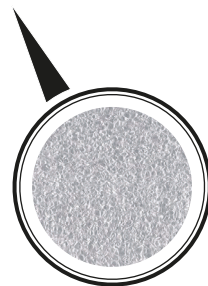
Sheet Metal

Two sheets of different heights for a good insertion between the cork and the bottle



Customizable space

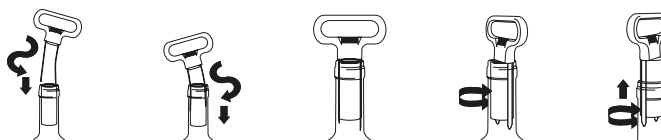
print area 15 x 60 mm (pad printing)



Plastic Cover

The roughness of the cover ensures a good grip in the hand.

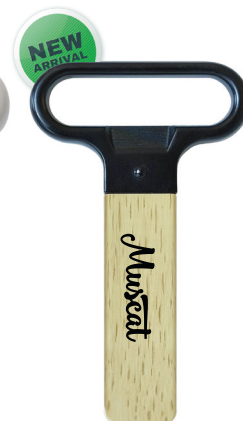
1:1 real size image



□ | 4.001.00
Grey



■ | 4.001.01
Black



■ | 4.001.04
Wood

Champagne Opener



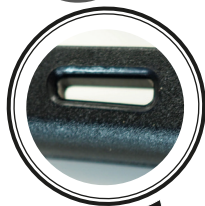
Plastic Reliefs

For a better grip of the cork.
Facilitate extraction.



Fix hole

It can be hung
thanks to its hole in
the handle.



Plastic Handle

The roughness of the
cover ensures a good
grip in the hand

EN It facilitates the extraction of the sparkling wine cork as a lever without risks and reducing effort.

FR La pince facilite l'extraction des bouchons à champagne et à crémant en toute sécurité.

IT Pulltex Italia presenta la nuova Pinza per Spumante, grazie alla quale è possibile stappare una bottiglia di bollicine senza sforzo e senza toccare il tappo. Può inoltre essere utilizzata per aprire le bottiglie con tappo a vite.

DE Es erleichtert das Herausziehen der Sektflaschen als Hebel ohne Risiken und reduziert den Aufwand.

ES Facilita la extracción del tapon de cava a modo de palanca sin riesgos y reduciendo el esfuerzo.

size: 13,5 x 5 x 2,5 cm

weight: 55 gr



certified by



104.518.10
White/White



104.518.13
Black/White



104.518.11
Black/Black



104.518.12
White/Black



104.518.14
Black/Burgundy



104.518.15
Black/Green



top print area ø 18 mm

**Other
Colours
Upon
Request**



5.001.08 | Optional Thermosealed Bag



& Stopper Pourer

EN This 2 in 1 Pourer & Stopper lets you pour your wine avoiding tablecloth to be stained. Moreover, it has a stopper that guarantees a leak-free seal. Efficient, elegant and yet simple this product is beloved by many.

FR Pour un service de qualité, le verseur anti-goutte évite de tacher la nappe, le bouchon s'adapte à tout type de bouteille. Matière: Verseur acrylique + Bouchon silicone.

IT Per un servizio di qualità, il tappo versatore evita che si macchi la tovaglia. Si adatta a tutti i tipi di bottiglie.

DE Pulltex Weinausgiesser & Verschluss in einem, servieren, ohne nachzutropfen, verhindern die Verschmutzung des Tischgedecks. Der Weinausgiesser passt sich an jeden Flaschenhals an.

ES Para un servicio de calidad, el tapón dispensador evita que se manche el mantel y se adapta a todo tipo de botellas.

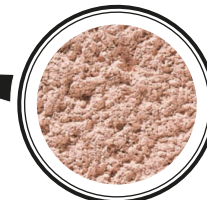


size: ø 2,6 x 10 cm
weight: 30 gr



Transparent acrylic plastic

Light and resistant material.
High rigidity and resistant thermoplastic.



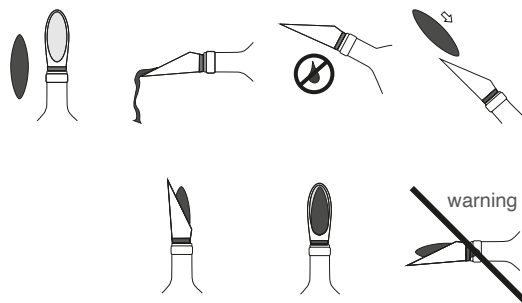
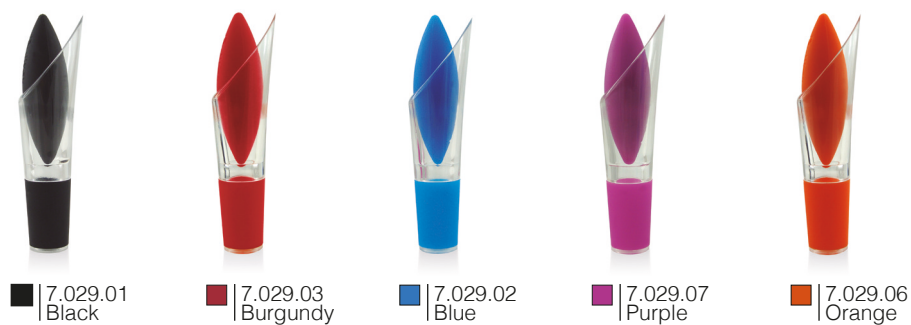
Silicone cap and fit

hermetic seal that prevents air from entering the bottle.



Customizable space

print area 50 x 12 mm
(pad printing)



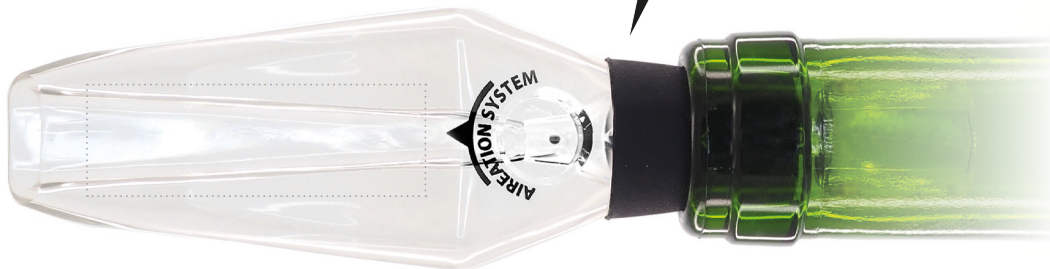
Wine Aerator AirVin

Aeration system

AirVin produces a constant flow of bubbles that aerate during filling the cup.

Silicone fit

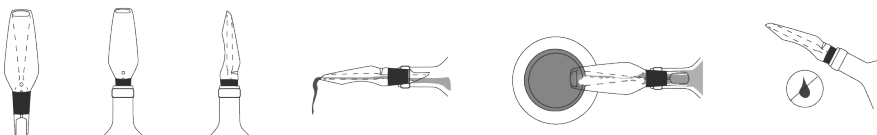
Hermetic closure to prevent spillage



Customizable space

print area 45 x 15 mm (pad printing)

7.848.00 | PMMA



EN The new Pulltex AirVin wine aeration device allows the wine to be aerated while it is served. The wine passes through the aerator Pulltex AirVin and thanks to the built-in internal channel system, air produces a constant flow of bubbles that aerate the wine. In addition, the oval and flat mouth allows a slower and controlled service.

FR Servir tout en aérant le vin, le nouveau 2 en 1 de PULLTEX. Le verseur biseauté permet d'assurer un service élégant tout en contrôlant le débit. Le système interne d'aération permet de générer un flux de bulles en mélangeant l'air et le vin, afin de libérer les arômes.

IT Il nuovo dispositivo di aerazione del vino Pulltex AirVin consente di aerare il vino nel momento in cui viene servito nel bicchiere. Quando esce dalla bottiglia, il vino passa attraverso l'interno dell'aeratore Pulltex AirVin, e, grazie alla disposizione del canale di aerazione posto dentro al dispositivo, si genera una corrente di aria interna che produce un flusso costante di bolle che arieggia il vino in quel momento. Inoltre, l'apertura ovale e piatta consente un servizio più piacevole e controllato nel bicchiere.

DE Mit dem neuen Pulltex AirVin Wein Belüfter & Ausgießer kann man den Wein bereits beim einschenken belüften. Der Wein läuft durch den Aerator und sein eingebautes Kanalsystem schafft die Luft, die einen konstanten Luftblasenfluss erzeugt. Damit wird der Wein gleichzeitig beatmet. Darüber hinaus ermöglicht die ovale und flache Mündung ein langsames und kontrollierteres Ausgießen.

ES El nuevo dispositivo de aireación de vino Pulltex AirVin, permite airear el vino en el mismo momento del servicio. Con el mismo movimiento elegante de servir en la copa, al salir de la botella, el vino pasa por el interior del aireador Pulltex AirVin y gracias a la disposición del canal interno de aireación del dispositivo, se genera una corriente de aire interna que produce un flujo de burbujas constante que airean el vino en ese mismo instante. Además, la forma ovalada y plana de su boca permite un servicio más pausado y controlado en la copa.



size: 13 x 2,4 x 3,8 cm
weight: 45 gr



& Stopper Dispenser

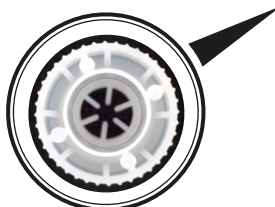
EN New wine stopper and pouring device with a dropper function to prevent wine stains.

FR Nouveau bouchon verseur anti goutte pour réguler le débit et éviter les tâches de vin.

IT La principale funzione del Tappo Dosatore Pulltex è quella di rallentare la fuoriuscita del vino durante il servizio in modo da avere sotto controllo la quantità di vino versata nel bicchiere. Inoltre possiede il tappo per richiuderlo dopo il servizio per non far stare il vino a contatto con l'aria.

DE Neuer Weinverschluss und Ausgießer mit Tropffunktion gegen Weinflecken.

ES Nuevo dispositivo tapón y vertedor de vino con función cortagotas para evitar las manchas de vino.



Pouring Device

The Polyethylene Filter facilitates the service of the wine without spilling drops.



Hermetic Closure

The ABS cap avoids exposing the wine, reducing its oxygenation.

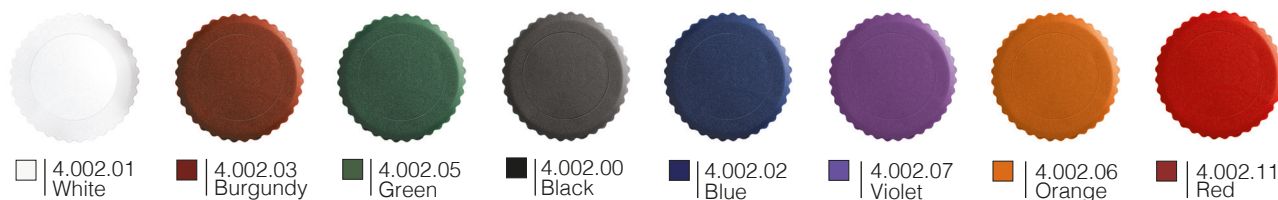


1:1 real size image

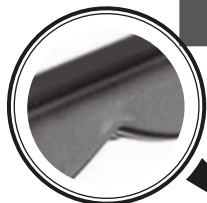
size: \varnothing 2,9 x 3,5 cm
weight: 7 gr
Material: Polietileno / ABS



top print area \varnothing 18 mm



Opener Pullcaps



Painted Galvanized Iron

Ergonomic design for a powerful grip. High resistant painting for longer life.



Easy opening

Small size head to open bottles by removing the crown cap



Fix hole

It can be hung thanks to its hole in the handle.

1:1 real size image



Customizable space

print area 60 x 8 mm
pad printing / laser engraving
Other measures upon request



4.811.05 | ■ Green



4.811.03 | ■ Burgundy



4.811.01 | ■ Black



EN Metallic bottle opener for crown stoppers. Easy to carry in a pocket due to the small size and weight. It is the perfect tool for professional use thanks to its ergonomic shape that resembles our classic corkscrew. Elegant design makes it an excellent promotional accessory.

FR Décapsuleur en métal. Un ergot adapté à un manche ergonomique pour faciliter la prise en main et l'ouverture. Idéal pour le service en restauration.

IT Apribottiglie in metallo per rimuovere il tappo a corona. Grazie alla sua grande utilità, è un oggetto indispensabile per i camerieri che si occupano del servizio di birra e bibite. L'estremità viene inserita alla base del tappo ed il manico resistente facilita l'azione della leva per rimuoverlo.

DE Mit reissistanten Materialien hergestellt. Durch die geringe Größe und Gewicht lässt sich bequem in der Tasche tragen. Dank seiner ergonomischen Form, die unserem klassischen Korkezieher ähnelt, ist es das perfekte Werkzeug für den professionellen Gebrauch. Elegantes Design macht es zu einem hervorragenden Werbeartikel.

ES Abrebotellas metálico para tapón de corona. Fabricado en material de alta resistencia y con un diseño elegante que facilita su transporte en el bolsillo gracias a su reducido tamaño y peso. La forma ergonómica del mango recuerda la clásica silueta de nuestro sacacorchos original.

size: 11 x 1,1 x 1,3 cm
weight: 30 gr



niGota SlowServing

Watertight seal

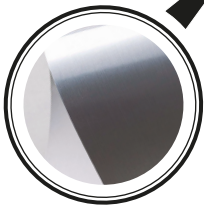
The lateral shape of design avoid slipping into the bottle.



SlowServing ni-gota
1:1 real size image

Aluminium Sheet

Certified for food & wine contact



**NEW
ARRIVAL**

Folding system

Fold to slow serving



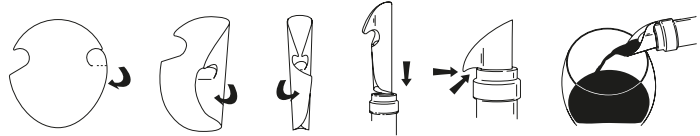
Customizable space

Possibility of marking up to the limit of the material

Slow Serving System

Reduces speed during service by improving oxygenation

Slow Serving System



Always show your Brand

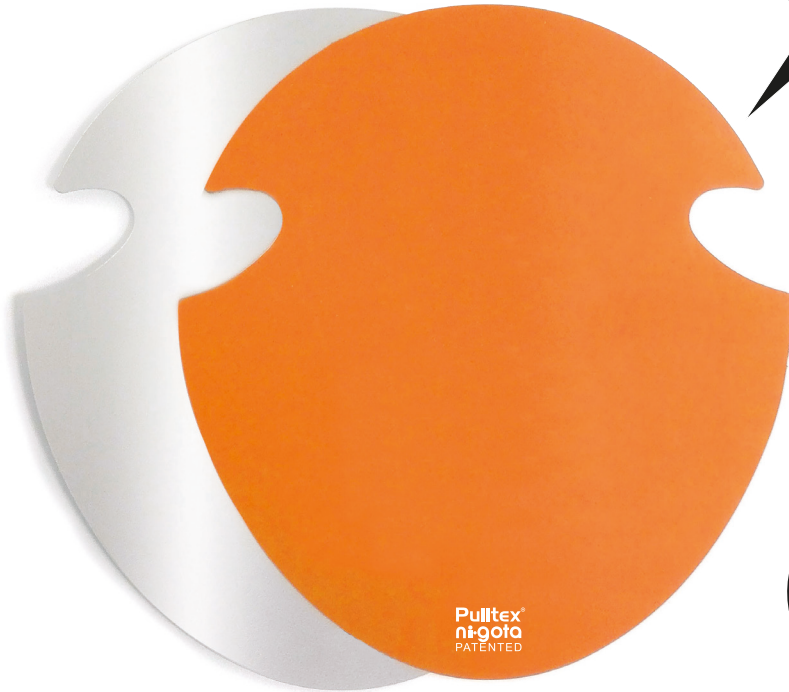
Pourer niGota



Standard ni-gota
1:1 real size image

Watertight seal

The lateral shape of design avoid slipping into the bottle.



EN This PVC pourer disk makes it easy to serve wine without spilling a drop. Its unique notched design keeps it from sliding into the bottle. Your logo always visible.

FR Placé dans le goulot, le verseur coupe la goutte pour un service impeccable. Système de blocage sur goulot qui évite au stoppe goutte de glisser dans la bouteille. Réutilisable, rincez à l'eau claire. Personnalisation hors goulot, toujours visible aux yeux de l'utilisateur. Produit breveté.

IT Il Salvagoccia Ni-Gota di Pulltex evita alle gocce di cadere sulla tavola e sulla bottiglia quando si serve il vino. Il Salvagoccia è una lamina di PVC, ricoperto da uno strato di vinile plastificato. Grazie al suo design con le due alette, il Salvagoccia Ni-Gota non scivola all'interno della bottiglia, e può adattarsi a bottiglie di qualsiasi dimensione e formato. E' un accessorio ideale per manifestazioni e degustazioni in cui spesso si deve versare vino. Ha infinite possibilità di personalizzazione e può rispecchiare a pieno l'immagine Aziendale diventando un utile biglietto da visita da dare al pubblico.

DE Patentierter Weinausgiesser aus metallisierter Folie mit "Widerhaken" die das Verrutschen in die Flasche verhindern. Ihr Logo immer sichtbar.

ES Lámina anti-goteo que permite servir el vino sin derramar gotas. Con freno para que no se deslice dentro de la botella. Su logo siempre visible.

Customizable space

Possibility of marking up to the limit of the material

Tricomposite

Formula based on the interlacing of 3 types of sheet. Aluminium / colored pvc / matt laminate.



Extra White
5.100.10 Standard
5.102.10 SlowServing



Aluminium
5.100.12 Standard
5.102.12 SlowServing



Brilliant Gold
5.100.22 Standard
5.102.22 SlowServing



Gold
5.100.13 Standard
5.102.13 SlowServing



Orange
5.100.15 Standard
5.102.15 SlowServing



Rubine Red
5.100.16 Standard
5.102.16 SlowServing



Bottle Green
5.100.17 Standard
5.102.17 SlowServing



Navy Blue
5.100.19 Standard
5.102.19 SlowServing



Dark Black
5.100.20 Standard
5.102.20 SlowServing

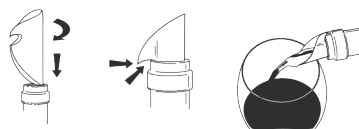


Slow Serving ni-gota
size: 9 x 8 x 0,1 cm
weight: 1 gr

Standard ni-gota
size: 9 x 8 x 0,1 cm
weight: 1 gr

Mini ni-gota
size: 8 x 7,2 x 0,1 cm
weight: 1 gr

material: Tricomposite
Aluminium
Colored PVC
PE Matt laminatte



Pourer niGota

Tricomposite

Formula based on the interlacing of 3 types of sheet. Aluminium / colored pvc / matt laminate.



niGota
Full Colour



Aluminium Sheet

Certified for food & wine contact

Slip Brake

The lateral shape of design avoid slipping into the bottle.



Customizable space

Marking up to the limit of the material. All printed image.

5.003.00 | Full Colour

1:1 real size image





5.001.04
Thermosealed bag



5.002.03
Bottle hanger



5.007.99
Folded cardboard



5.006.00
Folded cardboard

**ECO
FRIENDLY
PRODUCT**



5.005.00
Cardboard envelope



5.001.00
PET envelope



5.005.99
CMYK cardboard



5.008.00
Cardboard Envelope

**ECO
FRIENDLY
PRODUCT**



EN This PVC pourer disk makes it easy to serve wine without spilling a drop. Its unique notched design keeps it from sliding into the bottle.

FR Placé dans le goulot, le verseur coupe la goutte pour un service impeccable. Système de blocage sur goulot qui évite au stoppe goutte de glisser dans la bouteille. Réutilisable, rincez à l'eau claire. Personnalisation hors goulot, toujours visible aux yeux de l'utilisateur. Produit breveté.

IT Questo dischetto in PVC evita alle gocce di cadere sulla tavola quando si serve il vino. Il suo design innovativo gli impedisce di scivolare dentro la bottiglia.

DE Patentierter Weinausgiesser aus metallisierter Folie mit "Widerhaken" die das Verrutschen in die Flasche verhindern.

ES Lámina anti-goteo que permite servir el vino sin derramar gotas. Con freno para que no se deslice dentro de la botella..



size: 9 x 8 x 0,1 cm
weight: 2 gr

material: Tricomposite
Aluminium
Colored PVC
PE Matt laminatte



Holder Blister

EN New models of blister packs specially designed to hang on the bottles which are placed on the shelves of commercial establishments. The blister includes a cardboard printed in 4-colour printing on both sides. The blister can be easily inserted into the bottle by hand and the serrated hole prevents easy removal from the bottle.

FR Nouveaux modèles de blisters spécialement conçus pour vos opérations promotionnelles. Le blister inclut un carton imprimé en quadrichromie recto-verso. Le blister peut être facilement inséré sur le col de la bouteille, la découpe dentelée l'empêchant d'être facilement retiré.

IT Nuovi modelli di blister appositamente studiati per essere appesi alle bottiglie a scaffale. Il blister include un cartoncino stampato in quadricromia su entrambi i lati. Il blister si inserisce facilmente alla bottiglia, e la forma particolare del foro lo rende difficile da rimuovere.

DE Neue Modelle von Blisterverpackungen, die speziell für die Aufhängung an den Flaschen in den Regalen von Handelsbetrieben entwickelt wurden. Der Blister enthält einen beidseitig 4-farbig bedruckten Karton. Der Blister lässt sich leicht mit der Hand in die Flasche einführen, und das gezackte Loch verhindert ein leichtes Herausziehen aus der Flasche.

ES Nuevos modelos de blisters especialmente diseñados para colgarse en las botellas de los lineales de los establecimientos comerciales. El blister incluye un cartón impreso en cuatricromía por las 2 caras. El blister se puede insertar a mano fácilmente en la botella y el agujero dentado impide que se pueda sacar con facilidad de la botella.



104.832.99 | ■ Blister Holder Duo for Corkscrew



104.830.99 | ■ Blister Holder for Stopper

Corkscrew 2 Bot. size:
14 x 14 x 1,5 cm
weight: 90 gr

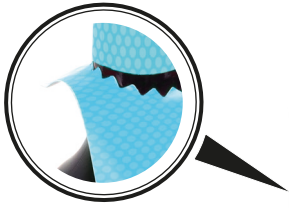
corkscrew model size:
20 x 5 x 1,5 cm
weight: 85 gr

stopper model size:
15 x 5,8 x 4 cm
weight: 35 gr

104.831.99 | ■ Blister Holder for Corkscrew

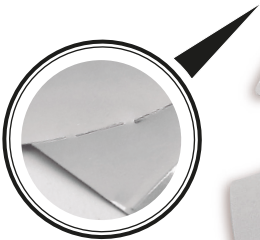


Holder niGota



Bottle Holder

Star-shaped hole. Security fixing to the neck of the bottle



Precut

The easiest way to start using

5.010.00 | Full Colour



1:1 real size image

Customizable space

Marking up to the limit of the material. All printed image.



EN Anti-drip sheet that allows the wine to be served without spilling drops. With brake so that it does not slide inside the bottle. It incorporates a wine bottle hanger, made of PVC with printing on the entire material. Pre-cut for ease of use.

FR Collettere pour anti-goutte à suspendre sur le col de la bouteille. Système de blocage sur goulot qui évite à l'anti-goutte de glisser dans la bouteille. Impression uniforme en quadrichromie sur la collettere et l'anti-goutte avec une pré découpe pour faciliter l'utilisation. Idéal pour vos opérations promotionnelles.

IT Collarino con dischetto salvagoccia, stampa in quadricromia su tutta la superficie. Pretagliato per facilitarne l'uso.

DE Anti-Tropf-Blatt, mit dem der Wein ohne Tropfen serviert werden kann. Mit Bremse, damit es nicht in die Flasche rutscht. Es enthält einen Weinflaschenhalter aus PVC mit Aufdruck auf das gesamte Material. Zur Erleichterung der Verwendung vorgeschritten.

ES Lámina anti-goteo realizado en PVC con impresion en la totalidad del material. Pretoquelado para facilitar su uso.



size: 7,4 x 15 cm
weight: 2 gr

material: Tricomposite
Aluminium
Colored PVC
PE Matt laminatte



Glass Identifier

EN Made of silicone, 10 pcs of glass identifiers in different colours. It is suitable for appetizers, cocktails, wine tastings or events where the glasses are easily mixed up. Presented on a plastic bar that can be stored in a drawer.

FR En silicone, 10 unités de couleurs différentes pour distinguer les verres. Idéal pour vos apéritifs dînatoires, cocktails et dégustations. Support pour rangement.

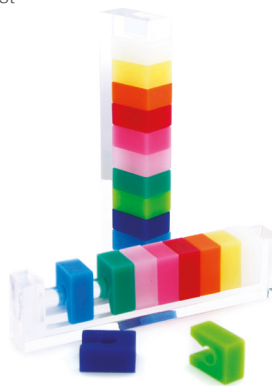
IT Realizzati in silicone, 10 anellini segnapicchi in colori differenti. Utili per aperitivi, cocktails, degustazioni o eventi dove spesso i bicchieri si possono confondere.

DE Die professionellen Brillen sind Gläser, die für die Gastronomie für das Gastgewerbe und für den perfekten Genuss jedes Getränkes im passenden Glas. A kleine Auswahl an Kristallgläsern von zeitloser Schönheit und dauerhafter Qualität.

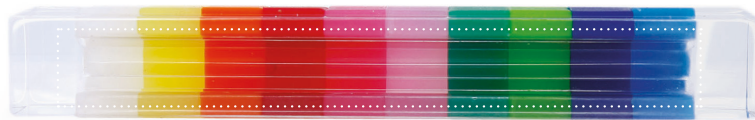
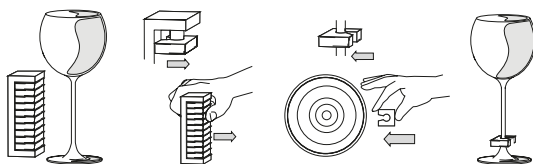
ES Realizados en silicona, 10 unidades de colores diferentes para distinguir las copas. Ideal para aperitivos, cócteles, degustaciones o eventos donde se mezclan las copas. Soporte para guardar los identificadores juntos en el cajón.

size: 11,6 x 2,9 x 1,6 cm
weight: 55 gr

Carton Box
Included

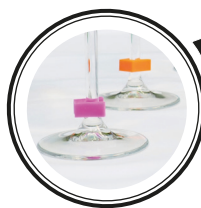


104.711.00 | Glass Identifier



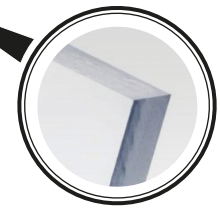
Silicone

Made of flexible silicone, they adapt to the majority of cup feet



Methacrylate support

Rigid support in transparent methacrylate to keep the 10 identifiers



Customizable space

standard print area 100 x 12 mm
Other measures upon request



Holder Identifier



Clipped

Perfect clipping to fit the neck of the bottle



Silicone

Perfect adaptation to the glass



4.716.01 | ■ Black



4.716.00 | □ White



EN Identifier of silicone glasses specially designed to be attached to the neck of the bottle. The clip system makes it easy to attach by hand and difficult to remove. It can also be fixed to the bottle with a safety strap with the channel that surrounds the neck clip.

FR Pour vos opérations promotionnelles. Le support personnalisable peut être fixé sur le goulot de la bouteille. Le système de clip facilite la fixation sur le col, un cordon antivol de sécurité pouvant être adapté. Les marque-verres en silicone permettent d'identifier vos verres lors des dégustations.

IT Identificatori di bicchieri in silicone appositamente progettati per essere fissati al collo della bottiglia. Il sistema a clip lo rende facile da attaccare e difficile da rimuovere. Può anche essere fissato alla bottiglia con una fascetta di sicurezza grazie all'alloggiamento presente nella clip.

DE Kennzeichnung von Silikonbrillen, die speziell für die Befestigung am Flaschenhals entwickelt wurde. Das Clip-System macht es einfach, mit der Hand zu befestigen und schwer zu entfernen. Es kann auch auf die Flasche mit einem Sicherheitsgurt mit dem Kanal, der den Hals Clip umgibt befestigt werden.

ES Identificador de copas de silicona especialmente diseñado para acoplarse al cuello de la botella. El sistema de clip hace que sea fácil de colocar a mano y difícil de extraer. También se puede fijar a la botella con una brida de seguridad gracias al canal que rodea el clip del cuello.

size: 6 x 6 x 3,8 cm
weight: 30 gr



AntiOx

Wine Saver



Silicone Platinum®

Silicone natural adherence, produce a vacuum area within the bottle neck.



Plastic Disc

Facilitate product printing



Activated Carbon Filter

Stops the oxidation process and preserves all the organoleptic properties



Day 1 2 3 4 5 6 7 8 9 10

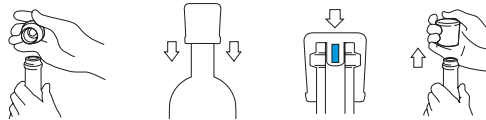
AntiOx

Vacuum Systems

Cork & Stoppers

10 days preserving all the organoleptic characteristics

RECOMMENDED BY THE BEST SOMMELIERS



Box included



104.510.01 | ■ Pure Black

Customizable space

top print area ø 25 mm
ABS plastic capsule.

1:1 real size image



certified by



patented product

EN With the AntiOx wine stopper you can enjoy the taste of fresh wine for up to 10 days after opening the bottle. The built-in activated carbon filter stops the oxidation process and preserves all the organoleptic properties of the wine. Its patented technology is proven scientifically and approved by the best European Sommeliers. For optimal performance, please keep the bottle in vertical position.

FR Le bouchon AntiOx permet de conserver le vin d'une bouteille entamée. Le principe breveté repose sur un charbon actif qui inhibe l'effet oxydant de l'oxygène sur le vin. Plus besoin de pomper, il suffit simplement de boucher la bouteille. Le bouchon AntiOx évite ainsi la formation d'acide acétique qui détériore le vin en lui donnant la désagréable odeur et saveur du vinaigre. Pour une utilisation optimale, maintenir la bouteille en position verticale.

IT Il Tappo AntiOx antiossidante e' fornito di un dispositivo al suo interno composto da un sistema rivoluzionario brevettato che evita l'ossidazione del vino all'interno della bottiglia. Una volta che la bottiglia di vino viene chiusa con il nuovo tappo AntiOx, l'ossidazione del vino si interrompe: il vino non rimane più a contatto con l'ossigeno e non viene più prodotto l'acido acetico che danneggia il vino. Per un ottimo funzionamento mantenere la bottiglia in posizione verticale.

DE Mit dem AntiOx Weinschluß können Sie den frischen Geschmack des Weins bis zu 10 Tagen nach dem Öffnen der Flasche genießen. Der eingebaute Aktivkohlefilter stoppt den Oxidationsprozess und auf diese Weise bleiben alle organoleptischen Eigenschaften des Weins erhalten. Die patentierte Technologie wurde wissenschaftlich bewiesen und von den besten europäischen Sommeliers anerkannt.

ES El tapón AntiOx contiene en su interior un filtro de carbono activo, especialmente formulado y patentado para evitar la oxidación del vino dentro de la botella. Una vez tapado el vino con el tapón AntiOx, el proceso de oxidación se detiene y el oxígeno deja de asociarse con el vino para formar ácido acético y dañarlo. De esta manera se evitan el desagradable olor y sabor avinagrado. Para un funcionamiento óptimo mantener la botella en posición vertical.



size: ø 3,8 x 4,4 cm
weight: 35 gr
Material: ABS
Silicone
Active Carbon

Pump & Stopper Wine Saver



Silicone Vacuum System

The silicone inner part ensures the tightness of the bottle.



Watertight seal

The o-ring secures vacuum inside bottle.

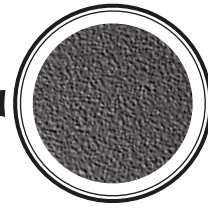
Valve closure

The metal ball rivet closure ensures the stopper fixation in any position.



Moulding Grip

The roughness of the cover ensures a good grip in the hand .



Inner Part





Customizable space

top print area ø 35 mm
side print area 10 x 60 mm
Other measures upon request



4.502.00
White



4.502.03
Burgundy



4.502.05
Green



4.502.01
Black



4.502.02
Blue



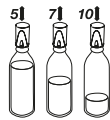
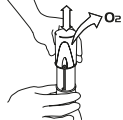
4.502.07
Violet



4.502.06
Orange



4.502.11
Red



EN The contact of the oxygen with the wine makes it oxidize easily once the bottle is opened. Within a few hours the wine gets spoiled. The Wine Saver takes the air out of the bottle preserving the wine for several days. It is used as a stopper as well.

FR L'oxygène accélère l'oxydation du vin des bouteilles entamées et le détériore en quelques heures. La pompe permet d'extraire l'oxygène de la bouteille, le bouchon assurant une conservation optimale des arômes durant plusieurs jours. Produit breveté.

IT L'ossigeno accelera l'ossidazione del vino una volta aperta la bottiglia e ritappata e lo deteriora dopo poche ore. La pompetta salvavino permette di estrarre l'ossigeno dalla bottiglia, fa da tappo e garantisce una conservazione ottimale delle caratteristiche del vino per diversi giorni.

DE Der Sauerstoff beschleunigt die Oxidation des Weines in geöffneten und wiederverschlossenen Flaschen und verschlechtert den Wein innerhalb von wenigen Stunden. Die Vakuum-Weinpumpe entzieht der Flasche Sauerstoff und dient gleichzeitig als Verschluss zur optimalen Konservierung des Weins und seiner Eigenschaften über mehrere Tage.

ES El oxígeno acelera la oxidación del vino de las botellas abiertas y retapadas, deteriorándolo en unas pocas horas. La bomba de vacío permite extraer el oxígeno de la botella y a la vez hace de tapón para permitir una conservación óptima de las características del vino durante varios días.



size: ø 4,7 x 10 cm
weight: 70 gr
Material: ABS
patented product



Silicone Wine Stopper

EN Silicone stopper for wine. Its patented inner shape, together with silicone natural adherence, produce a vacuum area within the bottle neck. Easy to open by pulling it out and close by pushing. The closure is totally hermetic and the bottle is completely sealed regardless of its position.

FR Bouchons en silicone spécialement conçus pour les vins. Le bouchon assure une conservation optimale après ouverture. Permet de boucher et de déboucher sans effort. La fermeture est totalement hermétique, quelle que soit la position de la bouteille. Système breveté. Personnalisable.

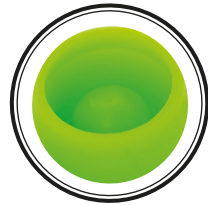
IT Tappo in silicone per vini fermi. La sua forma interna brevettata, insieme all'aderenza naturale del silicone, produce un'area di aspirazione all'interno del collo della bottiglia. Esso mantiene i vini per lungo tempo. La chiusura è totalmente ermetica e la bottiglia risulta completamente sigillata in qualunque posizione.

DE Silikon-Weinverschluss. Die patentierte Innenform des Verschlusses passt sich dem Flaschenhals an und verursacht einen Vakuumbereich innerhalb des Flaschenhalses und konserviert den Wein für eine längere Zeit. Der Verschluss versiegelt die Flasche hermetisch und verhindert den Flüssigkeitsverlust in jeder Position. Leicht in der Anwendung durch drücken oder ziehen.

ES Tapón de silicona para vinos. La forma interior patentada junto con la adherencia natural de la silicona hacen un cierre hermético en el cuello de la botella que permite conservar el vino durante más tiempo. Fácil de abrir y tapar, basta con tirar o presionar. El cierre es totalmente hermético y la botella no pierde líquido en ninguna posición.

Customizable space

Marking on upper ABS plastic capsule print area \varnothing 25 mm.

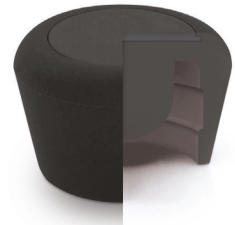


Shutter

Internal shutter to improve sealing.



Inner Part



5.001.05 | Optional Thermosealed Bag

Silicone Platinum®

Silicone natural adherence, produce a vacuum area within the bottle neck.



4.505.01 | Black



4.505.03 | Burgundy



4.505.06 | Orange



4.505.08 | Green



4.505.11 | Pink



4.505.09 | Blue



4.505.10 | Red



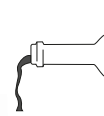
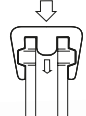
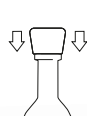
4.505.07 | Purple



4.505.05 | Light Green



4.505.04 | Yellow



size: \varnothing 4 x 2,6 cm

weight: 20 gr

Material: Platinum Silicone patented product



Sparkling ^{Silicone} Stopper

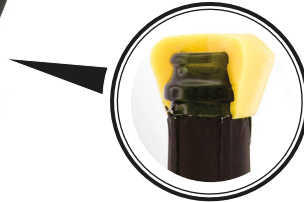
Customizable space

Marking on upper ABS plastic capsule print area \varnothing 25 mm.

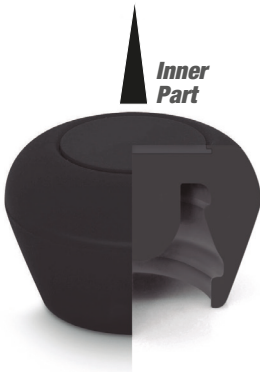


Silicone Platinum®

Silicone natural adherence, produce a vacuum area within the bottle neck.



Inner Part

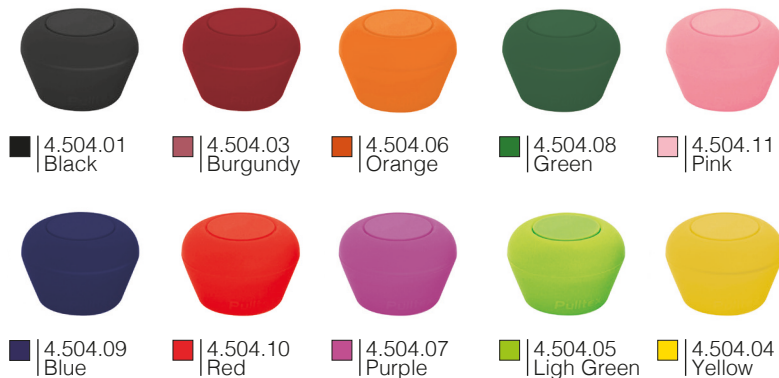


Shutter

Internal shutter to improve sealing.



5.001.05 | Optional Thermosealed Bag



max: 2 atm

EN Silicone stopper for sparkling wine. Its patented inner shape, together with silicone natural adherence, produce a vacuum area within the bottle neck which prevents the evaporation of the carbon dioxide. It keeps the sparkling wine fizzy for a longer time. Easy to open by pulling it out and close by pushing. The closure is totally hermetic and the bottle is completely sealed.

FR Bouchons en silicone spécialement conçus pour les vins pétillants. L'adhérence naturelle du silicone permet d'éviter l'évaporation du gaz carbonique. Le bouchon assure une conservation optimale de l'effervescence, après ouverture. Permet de boucher et de déboucher sans effort. La fermeture est totalement hermétique. Système breveté. Nous pouvons également insérer sur les bouchons vos plaques de muselet personnalisées.

IT Tappo in silicone per vini frizzanti e spumanti. La sua forma interna brevettata, insieme all'aderenza naturale del silicone, produce un'area di aspirazione all'interno del collo della bottiglia che previene l'evaporazione del diossido di carbonio. Esso mantiene i vini con le bollicine, frizzanti per lungo tempo. La chiusura è totalmente ermetica e la bottiglia risulta completamente sigillata.

DE Silikon-Sektverschluss. Eine patentierte innere Form, zusammen mit Silikonkautschuk Einhaltung, ein Vakuum innerhalb des Flaschenhalses, welche die Verdunstung des Kohlendioxid verhindert. Es hält den Sekt Kohlensäure für längere Zeit. Der Verschluss ist völlig hermetisch.

ES Tapón de silicona para botella tipo Champagne. La forma interior patentada junto con la adherencia natural de la silicona hacen un cierre hermético en el cuello de la botella que evita la salida del carbónico, conservando el vino espumoso durante más tiempo. Fácil de abrir y tapar, basta con tirar o presionar. El cierre es totalmente hermético.



size: \varnothing 4,7 x 3,1 cm
weight: 35 gr
Material: Platinum Silicone
patented product



Sparkling Wine Giro Stopper

Metallic Crown

Aluminum crown to beautify the rotating part of the base

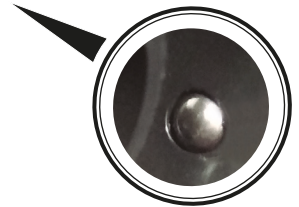


Finishes

Gold & Silver / Metallic Painted.
PVC Sand Moulding Finished /
Black & White

Shutter

Made with internal silicone shutter to guarantee the hermetic seal.

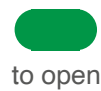


Lock Indicator

Red for secure closing.
Green to open and move

Closing System

The stainless steel ball closure ensures the stopper fixation in any position.

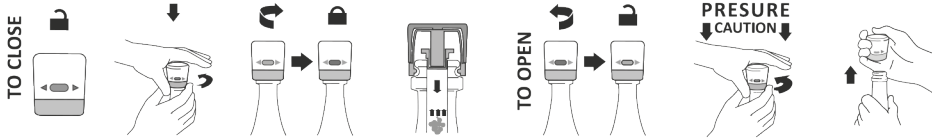


1:1 real size image



Customizable space

print area ø 25 mm
Optional Polyurethane resin stickers ø 30 mm



EN Stopper with hermetic silicone interior suitable for Prosecco, Sparkling Wine, Champagne and Cava. The natural grip of the silicone creates a hermetic seal on the neck of the bottle that prevents carbon dioxide outflow, preserving the sparkling wine for longer. Easy opening and closing system, just press and turn. The new and unique steel ball lock system makes service easier. The stopper allows to keep the bottle in any position.

FR Nouveau bouchon en PVC pour les crémants et les champagnes. Totalement hermétique, par l'adhérence naturelle du silicone qui permet d'éviter l'évaporation du gaz carbonique et de conserver la bouteille sous pression. Le nouveau système de fermeture à billes facilite le service : ¼ de tour pour le rebouchage (voyant rouge), ¼ de tour pour le débouchage (voyant vert).

IT Tappo in plastica con interno in silicone per garantire la chiusura ermetica, indicato per vini frizzanti e spumanti. La sua forma interna, insieme all'aderenza naturale del silicone, produce un'area di aspirazione all'interno del collo della bottigliache previene l'evaporazione del diossido di carbonio. Il sistema di chiusura a giro garantisce la chiusura ermetica ed impedisce che il tappo salti, e la bottiglia risulta completamente sigillata in qualunque posizione.

DE Flaschenverschluss mit hermetischem Innenleben aus Silikon geeignet für Prosecco, Sekt, Champagner und Cava. Der natürliche Griff des Silikons schafft eine hermetische Abdichtung am hermetische Abdichtung des Flaschenhalses, die das Ausströmen von Kohlendioxid verhindert und den länger haltbar. Einfaches Öffnen und Schließen System, einfach drücken und drehen. Das neue und einzigartige Stahlkugel-Verschluss-System macht Wartung einfacher. Flaschenverschluss ermöglicht es, die die Flasche in jeder Position zu halten.

ES Tapón de plástico con interior hermético realizado en plástico y silicona para vinos espumosos en botella tipo Champagne. La adherencia natural de la silicona crea un cierre hermético en el cuello de la botella que evita la salida del carbónico, conservando el vino espumoso durante más tiempo. Fácil de abrir y tapar, basta con presionar y girar. El sistema de cierre con bolas garantiza el hermétismo de la pieza y evita que este salga despedido por causas de presión. Podemos conservar la botella en cualquier posición.



4.525.00 | White / Gold



4.525.02 | White / Silver

Rosé / Gold / Silver
Printed only in
Black or White



4.525.03 | Black/Gold



4.525.01 | Black



4.525.12 | Rosé



4.525.10 | Gold



4.525.11 | Silver



4.525.40 | Optional Carton Box



5.001.07 | Optional Thermosealed Bag



size: ø 4 x 4,7cm
weight: 35 gr
Material: ABS
silicone
aluminum alloy ring

Sparkling wine Remover/Stopper

EN Remove champagne corks easily and effortlessly. Functions as a stopper once the bottle is open.

FR La pince permet un débouchage sans effort des crémants et des champagnes, le bouchon assurant une conservation optimale. Produit breveté.

IT Facilita l'estrazione del tappo di spumante senza rischi e senza sforzo. Si utilizza come tappo della bottiglia una volta aperta.

DE Der Remover & Stopper, ist ein Verschluss der auch ein müheloses und unkompliziertes Entkorken der Sektflaschen anbietet.

ES Facilita la extracción del corcho del cava sin riesgos y sin esfuerzo. Actúa como tapón de la botella una vez abierta.



size: 7 x 4,6 x 3,9 cm
weight: 65 gr
Material: ABS / Iron



Iron Levers

The levers perform the closing function (stopper) and facilitate fixing to extract cork



Inner Part

Stopper

Lever blocks stopper to bottle under neck, sealing with silicone stopper.



Remover

The teeth when squeezing the cork facilitates its extraction. Manually pressing.



Shutter

Made with internal silicone shutter to guarantee the hermetic seal.

Customizable space

side print area 20 x 30 mm
side print area 10 x 50 mm
Other measures upon request



4.522.06
Orange



4.522.03
Burgundy



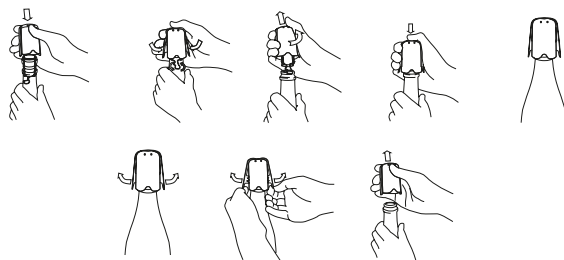
4.522.07
Purple



4.522.05
Green



4.522.01
Black



Sparkling wine Saver/Stopper



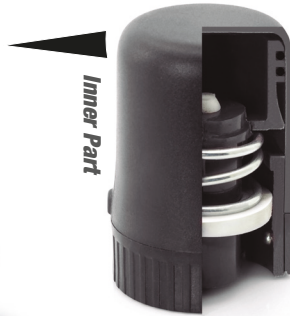
Watertight seal

The o-ring secures vacuum inside bottle



Valve Closure

The stainless steel ball closure ensures the stopper fixation in any position



Inner Part

Customizable space

top print area \varnothing 30 mm
side print area 15 x 40 mm
Other measures upon request



4.500.06
Orange



4.500.05
Green



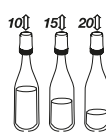
4.500.02
Blue



4.500.01
Black



CLOSE



OPEN



EN Stopper and vacuum saver that maintains pressure inside the bottle once it has been opened, preserving the effervescence and flavours of the sparkling wine. Instructions for use: To close, place the stopper on the lip of the bottle and press hard to insert its inner ring in the lower part of the stopper to the lock position, and pump up to inject air. To open, place one hand on the stopper to prevent it from being expelled due to the pressure, while turning the rotating ring back to the open position with the other hand. Keep out of reach of children.

FR Bouchon et pompe à pression pour maintenir l'effervescence des vins pétillants et conserver les arômes des bouteilles entamées. Fermer: Poser le bouchon sur le col de la bouteille en exerçant une pression afin de pouvoir tourner la bague sur le cadenas fermé. Pomper pour remettre la pression. Ouvrir: Mettre une main au-dessus du bouchon pour éviter qu'il ne soit projeté lors de l'ouverture. Avec l'autre main, tourner la bague sur le cadenas ouvert. Ne pas laisser à la portée des enfants. Produit breveté.

IT Tappo e pompetta due in uno che mantiene la pressione e l'effervescenza delle bollicine e che conserva il sapore dopo che si è aperta la bottiglia. Chiudere: mettere il tappo sulla bottiglia e spingere con forza per inserire la parte di gomma nella bottiglia. Contemporaneamente ruotare la parte girevole e fissarla al punto di chiusura. Aprire: mettere la mano sopra il tappo al fine di evitarne l'espulsione e con l'altra mano ruotare la parte girevole fino alla posizione di apertura.

DE Verschluss mit Luftpumpe, um den Druck im Innern der Sektflasche zu erhalten und somit die Kohlensäure und die Aromen in den geöffneten Flaschen zu konservieren. Bedienung: Schließen: Bringen Sie den Verschluss auf der Flasche an und drücken Sie ihn mit Kraft an, damit er gut im Flaschenhals sitzt. Anschließend drehen Sie den unteren Ring in die geschlossene Position. Befeuhten Sie den Verschluss, wenn Sie Luft in die Flasche drücken. Öffnen: Halten Sie die Hand über den Verschluss, um zu vermeiden, dass er durch den Druck herauspringt und drehen Sie den unteren Ring in die geöffnete Position. Die Flasche ausserhalb der Reichweite von Kindern aufbewahren.

ES Tapón y bomba de aire para mantener la presión en el interior de la botella de cava y conservar la efervescencia y los aromas de las botellas destapadas. Modo de empleo: Para cerrar: poner el tapón sobre la botella y presionar con fuerza para que entre bien en el cuello. A continuación girar el aro inferior hacia la posición de cerrado. Bombear para inyectar aire. Para abrir colocar la mano sobre el tapón para evitar que la presión lo expulse y girar el aro inferior hacia la posición de abierto. No dejar al alcance de los niños.



size: \varnothing 4,6 x 6,6 cm
weight: 60 gr
Material: ABS

FridgeToGo

Backpack-cooler

EN The right temperature can be the difference between success and failure during a wine presentation. Carry your wines at the right temperature thanks to this backpack-cooler with capacity for 2 bottles of wine.

FR Le sac isotherme «Fridge to Go» est conçu pour 2 bouteilles de vin ou champagne. Il permet de maintenir une température constante tout au long de la journée. Les plaques réfrigérées sont insérées dans des compartiments avec des fermetures à glissière.

IT Zaino refrigerato per il trasporto fino a 2 bottiglie di vino o di champagne. Il nostro zaino dà la possibilità di mantenere la temperatura ottimale durante un'intera giornata di utilizzo.

DE Die richtige Temperatur kann den Unterschied zwischen Erfolg und Misserfolg bei einer Wein Weinpräsentation. Tragen Sie Ihre Weine bei der richtigen Temperatur dank dieser Rucksack-Kühlbox mit Kapazität für 2 Weinflaschen.

ES La temperatura correcta marca la diferencia en una presentación. «Fridge to Go» es una mochila para el transporte refrigerado de 2 botellas de vino o cava. El sistema «Fridge to Go» de Pulltex genera el frío necesario para mantener las botellas frías durante todo un día.



Cooler Gel ®

Developed to maintain temperature in transport for hours.

Nylon

Excellent resistance
Excellent tear strength
Water Repellent filament



Removable Parts

Removable parts to cool in the freezer



Customizable space

print area 120 x 80 mm
other measures upon request

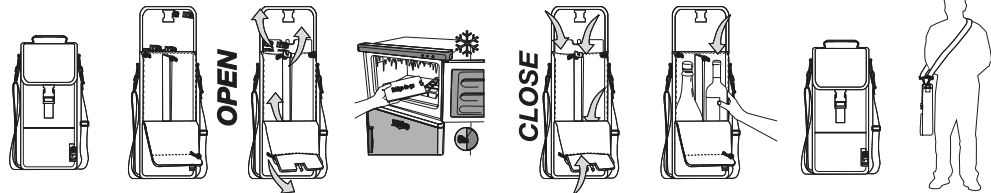
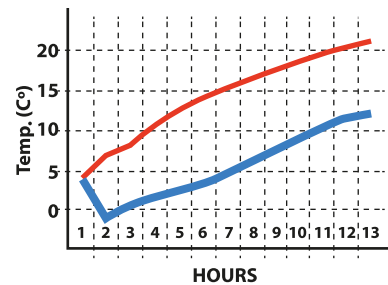
4.730.00 | Fridge to Go

Fridge to Go vs Cooler Bags

HOURS	Fridge to Go	Cooler Bags
Initial	4	4
1	1	6.7
2	0.4	8.2
3	1.6	10.5
4	2.4	12.5
5	3.4	13.9
6	4.7	15.3
7	6.2	16.5
8	7.5	17.7
9	8.9	18.7
10	10.3	19.5
11	11.6	20.3
12	12.2	21.1

TEST CONDITIONS:

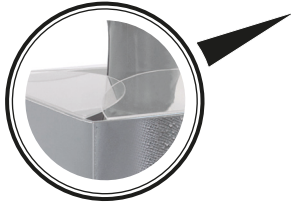
Ambient Temperature: 24°C
Measure intervals: Hourly
Measurement increments: °C
Proposed time of usage: 12 hours



Wine & Champagne FreezerBox

Flap Closure

This closure helps maintain the correct temperature inside

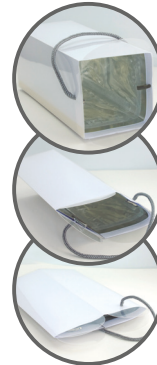


Cooler Gel ®

Developed to maintain temperature throughout service



Foldable in Freezer



Customizable space

print area 95 x 245 mm



107.301 | ■



Upon request | ■ ■ ■ ■
All printed image



EN Light and practical cooling box made of highly-resistant transparent PVC. Its interior walls are covered with "CoolGel" packs that help keeping bottles at the optimum temperature. The upper flaps also ensure coolness to stay in.

FR Pour refroidir et garder fraîche la bouteille tout au long du repas, sans eau ni glaçons. La Freezer box se conserve au congélateur pour être prête à l'emploi. Cordon pour faciliter le transport, Base stable pour un minimum d'encombrement sur la table.

IT Contenitore per mantenere il freddo, realizzato in plastica, leggero, pratico e resistente. La parete esterna è realizzata in pvc trasparente, mentre all'interno si trova un gel refrigerante che assicura il mantenimento delle condizioni termiche della bottiglia da degustare.

DE Leichte und praktische Kühlbox aus hochbeständigem, transparentem PVC. Ihre Innenwände sind mit mit "CoolGel"-Packungen, die helfen Flaschen auf der optimalen Temperatur zu halten Temperatur zu halten. Auch die oberen Klappen sorgen dafür, dass die Kühle drinnen bleibt.

ES Mantenedor de frío ligero, práctico y resistente. Su cara exterior está fabricada con PVC transparente de alta resistencia, mientras que varios cuerpos de "CoolGel" en su interior aseguran que el contenido de la botella a degustar se conserve en óptimas condiciones térmicas.

size: 10 x 10 x 25 cm
weight: 280 gr



IceBag® Foldable

EN This waterproof Icebag has reinvented the way to serve fresh wine anywhere & at any moment. Modern and innovative, it lets you easily transport up to 2 bottles at a cold temperature. Made of durable transparent material.

FR Pratique, en utilisant un minimum d'espace sur les tables. Pliable, donc peu encombrant pour le stockage après le service. Un outil élégant pour votre communication. Existe en 3 & 5 mm

IT Sacchetto di plastica termosaldato da riempire con acqua e ghiaccio, un secchiello per ghiaccio divertente e pieghevole che ne facilita lo stoccaggio e il trasporto. Un modo elegante e casual per servire vino freddo sul tavolo.

DE Dieser wasserdichte Icebag hat die Art und Weise neu erfunden, wie man frischen Wein überall und zu jeder Zeit zu servieren. Modern und innovativ, ermöglicht er Ihnen Transport von bis zu 2 Flaschen bei kühler kalten Temperatur. Hergestellt aus haltbarem transparentem Material.

ES Bolsa de plástico termo-sellada para llenar con agua y hielo, una cubitera divertida y plegable que facilita su guardado y su transporte. Una manera elegante y desenfadada de servir el vino frío en la mesa.

size 1 Bot.:
11,5 x 10,5 x 25 cm
weight: 75 gr

size 2 Bot.:
16 x 15,5 x 22 cm
weight: 140 gr



Handles

Comfortable handles to carry in a simple and comfortable way

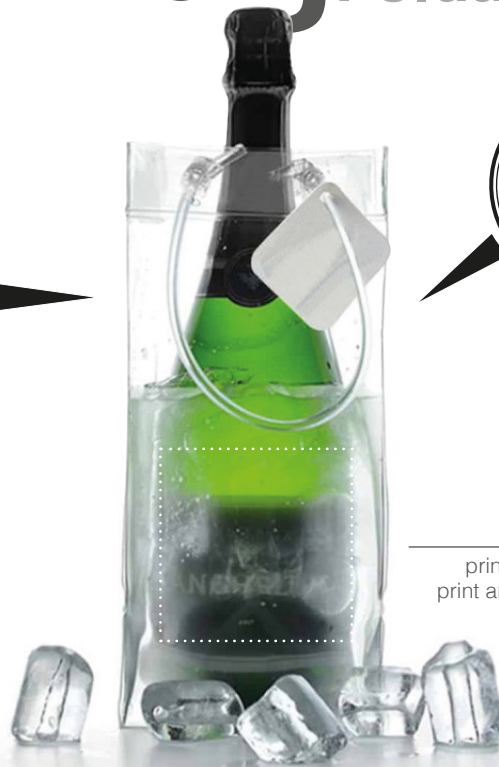


Transparent plastic

Resistant with different thicknesses. foldable and very light.

Customizable space

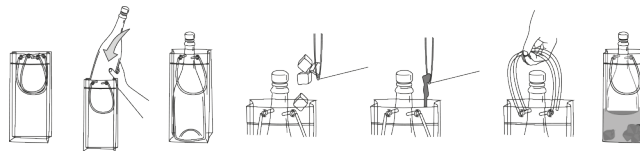
print area 75 x 75 mm for 1 bottle
print area 120 x 150 mm for 2 bottles
other measures upon request



4.341.00 | □ 0'3 mm
for 1 Bottle
4.341.05 | □ 0'5 mm
for professional use | under request



4.342.00 | □ 0'7 mm
for 2 Bottles



Wine & Champagne Cooler Bags



Cooler Gel®

Developed to maintain temperature throughout service



Security Cord

Double function of preventing the bottle as well as the cold coming out of the bag.



EN Cooler Bags are used to quickly cool down a bottle before serving or to keep it at the ideal temperature throughout the meal. Store in the freezer to have it ready-to use when necessary. Its wide area ensures a complete bottle coverage and offers excellent branding opportunities. Made of insulating material that prevents the cold to escape during long hours of usage. Perfect for picnics, barbecues, or on holiday.

FR Pour rafraîchir rapidement les bouteilles et les conserver à la température idéale tout au long du repas. A conserver au congélateur pour être prêt à l'emploi. Le «cool gel» associé à une matière isolante pour une fraîcheur optimale. Un cordon de sécurité pour fermer le manchon et isoler le froid à l'intérieur.

IT Borsa raffreddavino per raffreddare le bottiglie o per mantenere il freddo della bottiglia per l'intero pasto. Va tenuto in freezer in modo che sia sempre pronto all'uso. All'interno si trova uno strato di gel e di un isolante che impedisce al freddo di disperdersi verso l'esterno della borsa.

DE Kühlmanschette werden verwendet, um eine Flasche vor dem Servieren schnell abzukühlen vor dem Servieren zu kühlen oder die ideale Temperatur während der gesamten Mahlzeit zu halten. Im Gefrierschrank aufbewahren, damit sie bei Bedarf zu verwenden. Der große Fläche gewährleistet eine vollständige Abdeckung und bietet hervorragende Branding-Möglichkeiten. Hergestellt aus Isoliermaterial, das verhindert die Kälte während langer Stunden der Nutzung. Perfekt für Picknicks, Grillpartys oder im Urlaub.

ES Bolsas de frío para enfriar botellas sobre la mesa o para mantener el frío de la botella salida de la nevera durante toda la comida. Se debe guardar en el congelador para que esté lista cuando sea necesario. Un acabado en tejido de alta resistencia, que le confiere una imagen elegante y moderna, con un interior en nylon negro. Su interior con capa de "cool gel" y un material aislante que evita que el frío se disperse hacia el exterior de la bolsa.

Customizable space

print area 50 x 50 mm
print area 40 x 120 mm
Magnum: print area 70 x 120 mm
other measures upon request



Magnum Bottle Size

7.830 | ■ Magnum Gold



Magnum Bottle Size

7.829 | ■ Magnum Black



360° printed

All Image Printing under request



7.810 | □ Wine
7.813 | ■ Wine
7.812 | ■ Wine

7.820 | □ Champ.
7.823 | ■ Champ.
7.822 | ■ Champ.



7.821 | ■ Champ.
7.846 | ■ Champ.
7.845 | ■ Champ.



STANDARD
size: 27 x 17 x 2 cm
weight: 345 gr

MAGNUM
size: 35 x 19,5 x 2 cm
weight: 345 gr

Wine & Champagne Elastic Cooler

EN This new Pulltex wine cooler design includes some important improvements when compared to other similar articles, it incorporates a sturdy handgrip system making the serving process easier and safer. The elastic strips allow inserting and removing the bottle effortless and provides perfect fastening. Store the cooler in the fridge before use and it will maintain your wine temperature stable during the meal. A "cool gel" inner layer and nylon tissue on both sides will guarantee a perfect performance of the cooler.

FR Le nouveau refroidisseur PULLTEX : des bandes élastiques qui permettent de fixer la bouteille à l'intérieur et une anse qui facilite la prise en main et le service. A conserver au congélateur pour être prêt à l'emploi. Le « cool gel » est associé à une matière isolante pour une fraîcheur optimale durant tout le repas. Personnalisation en quadrichromie possible (Fabrication spéciale avec un minimum de commande, nous consulter)

IT Nuovo raffreddabottiglie Pulltex con impugnatura per facilitare la presa, ed elastici per assicurare il fissaggio della bottiglia all'interno del sacchetto ed evitare che la bottiglia possa scivolare fuori durante la mescita. Mantiene il freddo dalla bottiglia durante tutto il pasto. Per ottenere prestazioni ottimali devono essere conservati in freezer per essere pronti in caso di necessità. Il suo strato interno di "gel refrigerante" e finitura su entrambi i lati con tessuto di nylon, garantiscono il corretto funzionamento del prodotto.

DE Die neue Pulltex Weinkühler-Manschette enthält einige wichtige Verbesserungen im Vergleich zu anderen ähnlichen Artikeln. Das stabile Handgriff-System, ermöglichen eine einfachere und Sichere Bedienung. Die elastischen Streifen ermöglichen das Einsetzen und Entfernen der Flasche mühelos und sorgen für eine perfekte Befestigung. Vor dem Gebrauch lagern Sie den Kühler im Kühlschrank um die Weintemperatur für die Verkostung stabil zu halten. Das "Kühl-Gel" in der Innenschicht, garantieren eine perfekte Leistung des Kühlers.

ES Nueva manta de frío Pulltex con sistema "Bottle-Save" que consta de un asa, para facilitar su agarre y cintas elásticas que garantizan la sujeción de la botella dentro de la manta incluso con la botella mojada por condensación. Se guarda en el congelador y se coloca en la botella en el momento del servicio, esta mantiene el frío de la botella salida de la nevera durante varias horas.. Su interior con capa de "Cool Gel" y el acabado en ambas caras con tela de nylon, garantizan el óptimo funcionamiento del producto. También se puede marcar en cuatricromía en la cara principal.



Cool Gel

Developed to maintain temperature throughout service



Nylon

Excellent resistance
Excellent tear strength
Water Repellent filament



Elastic Straps

Hook and loop fastener it fits to almost every bottle shape and size



Handle

Elastic handle to improve grip during service



Customizable space

print area 100 x 150 mm
other measures upon request



OPTIONAL BOX
007.700.40



7.702.01
Black



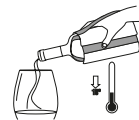
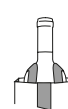
7.702.03
Burgundy



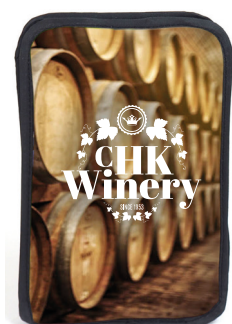
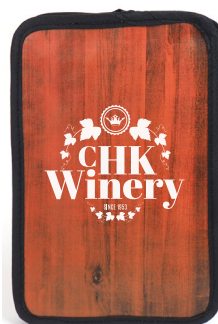
7.702.02
Wood Transfer



All printed Image
Upon request



size: 18 x 11 x 2,5 cm
weight: 250 gr



Cooler Band

Wine & Champagne



Addaptable Elastic

Elastic strap to adapt to all types of bottles



Customizable space

print area 70 x 165 mm
other measures upon request



Other Colours Upon Request

7.701.00
Black



Nylon

Excellent resistance
Excellent tear strength
Water Repellent filament



Cool Gel

Developed to maintain temperature throughout service

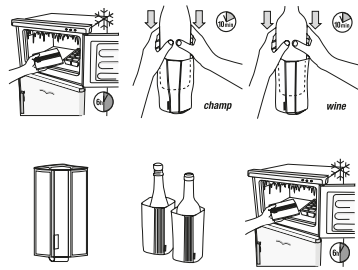


Elastic Strap

Hook and loop fastener it fits to almost every bottle shape and size



OPTIONAL BOX
007.700.40



EN Pulltex wine cooler design includes some important improvements when compared to other similar articles, it incorporates a sturdy handgrip system making the serving process easier and safer. The elastic strips allow inserting and removing the bottle effortless and provides perfect fastening. Store the cooler in the fridge before use and it will maintain your wine temperature stable during the meal. A "cool gel" inner layer and nylon tissue on both sides will guarantee a perfect performance of the cooler.

FR Refroidisseur PULLTEX : des bandes élastiques qui permettent de fixer la bouteille à l'intérieur et une anse qui facilite la prise en main et le service. A conserver au congélateur pour être prêt à l'emploi. Le « cool gel » est associé à une matière isolante pour une fraîcheur optimale durant tout le repas. Personnalisation en quadrichromie possible (Fabrication spéciale avec un minimum de commande, nous consulter)

IT Raffreddabottiglie Pulltex con impugnatura per facilitare la presa, ed elastici per assicurare il fissaggio della bottiglia all'interno del sacchetto ed evitare che la bottiglia possa scivolare fuori durante la mescita. Mantiene il freddo dalla bottiglia durante tutto il pasto. Per ottenere prestazioni ottimali devono essere conservati in freezer per essere pronti in caso di necessità. Il suo strato interno di "gel refrigerante" e finitura su entrambi i lati con tessuto di nylon, garantiscono il corretto funzionamento del prodotto.

DE Die neue Pulltex Weinkühler-Manschette enthält einige wichtige Verbesserungen im Vergleich zu anderen ähnlichen Artikeln. Das stabile Handgriff-System, ermöglichen eine einfachere und Sichere Bedienung. Die elastischen Streifen ermöglichen das Einsetzen und Entfernen der Flasche mühelos und sorgen für eine perfekte Befestigung. Vor dem Gebrauch lagern Sie den Kühler im Kühlschrank um die Weintemperatur für die Verkostung stabil zu halten. Das "Kühl-Gel" in der Innenschicht, garantieren eine perfekte Leistung des Kühlers.

ES Manta de frío Pulltex con sistema "Bottle-Save" que consta de un asa, para facilitar su agarre y cintas elásticas que garantizan la sujeción de la botella dentro de la manta incluso con la botella mojada por condensación. Se guarda en el congelador y se coloca en la botella en el momento del servicio, esta mantiene el frío de la botella salida de la nevera durante varias horas.. Su interior con capa de "Cool Gel" y el acabado en ambas caras con tela de nylon, garantizan el óptimo funcionamiento del producto. También se puede marcar en cuatricromía en la cara principal.



size: 18 x 11 x 2,5 cm
weight: 250 gr



Wine & Champagne Wrap Cooler

EN The Wrap Cooler quickly cools down the wine or the sparkling wine to its perfect temperature and keeps it chilled during longer hours. Thanks to the hook and loop fastener it fits to almost every bottle shape and size. Store in the freezer to be ready to use when necessary.

FR Refroidisseur mixte pour rafraîchir les bouteilles de vin ou d'effervescents et les conserver à la température idéale tout au long du repas. A conserver au congélateur pour être prêt à l'emploi.

IT Raffreddavino polivalente per raffreddare bottiglie di vino bianco e spumante quando escono dal frigo e mantenerle alla temperatura ideale durante la degustazione. Riporla nel congelatore affinché sia pronta all'uso.

DE Vielseitig einsetzbare Kühlmanschette zur Kühlung von Weißwein- und Sektflaschen, wenn sie aus dem Kühlschrank herausgeholt werden, und zur Erhaltung der Idealtemperatur während der Verkostung. Bewahren Sie die Manschette im Gefrierfach auf, damit sie immer einsatzbereit ist. Die Kühlmanschette ist unzerbrechlich und passt sich dank des Klettverschlusses nahezu jeder Flaschenform und -größe an.

ES Manta enfriadora polivalente para refrigerar botellas de vino blanco y de cava para su servicio en mesa y mantenerlas a la temperatura ideal durante toda la degustación. Guardar en el congelador para que esté lista cada vez que sea necesario.

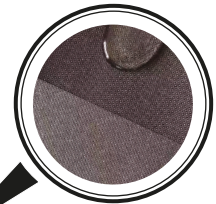


size: 35,5 x 18 x 0,5 cm
weight: 296 gr



Velcro

Wine & Champagne bottles adaptable closure



Nylon

Excellent resistance
Excellent tear strength
Water Repellent filament



Cool Gel

Developed to maintain temperature throughout service



Customizable space

print area 50 x 50 mm
print area 40 x 80 mm
other measures upon request



OPTIONAL BOX
007.700.40



7.700.01
Black



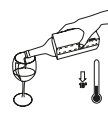
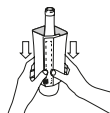
7.700.03
Burgundy



7.700.02
Dark Blue



7.700.00
White

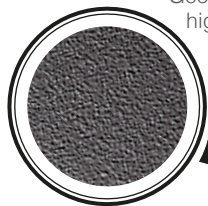


Wine & Champagne Chiller Cooler Pot



Plastic Cover

Good dimensional stability,
high abrasion resistance.
Fine grain finish.



Screw closure

Quick thread for fast
assembly of the part

Cooler Gel ®

Developed to maintain
temperature throughout
service



bottle máx ø 90 mm

Customizable space

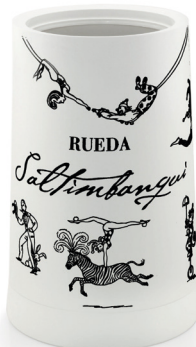
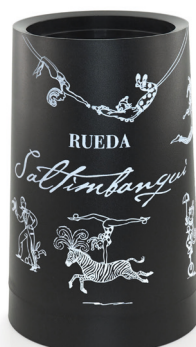
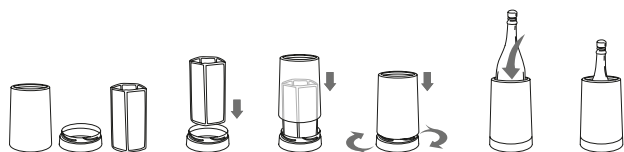
standard print area:
Pad printing 60 x 100 mm
Silk screen printing 360° (only 1 colour)
Other measures upon request



107.346.00 | White
White Cooler
Wrap Inside

107.345.00 | Black
Black Cooler
Wrap Inside

107.346.13 | Gold
White Cooler
Wrap Inside



EN The CoolerPot is a plastic wine cooler with a cooling gel bag inside. The gel bag can be taken out and kept in the freezer so that it does not take place and is inserted into the plastic base at the time of service. In this way we do not need ice and ice buckets, the CoolerPot occupies less space on the table, in the warehouse and in the freezer than traditional ice buckets.

FR Le CoolerPot est un refroidisseur à vin innovant, avec un sac en gel amovible à l'intérieur. Découvrez une nouvelle façon de servir le vin, à sa température idéale, en économisant de l'espace sur votre table et dans votre congélateur. Aucun glaçon n'est nécessaire, protégeant ainsi les étiquettes de vos bouteilles et évitant les gouttes d'eau sur votre nappe afin d'assurer un service impeccable. Personnalisation 360° possible, nous consulter.

IT Il nuovissimo Raffredda Bottiglie Cooler Pot di Pulltex è un accessorio ideale per il servizio di vini bianchi e spumanti. Leggero, pratico e resistente, il Raffredda Bottiglie Cooler Pot è un refrigeratore in plastica con all'interno una fascia di gel refrigerante estraibile e riponibile in congelatore. In questo modo è possibile tenere a temperatura la bottiglia senza l'uso del ghiaccio, inoltre il Raffredda Bottiglie Cooler Pot occupa molto meno spazio di un tradizionale secchiello ghiaccio.

DE Der CoolerPot ist ein Weinkühler aus Kunststoff mit einem darin befindlichen Kühlbeutel. Der Gelsack kann herausgenommen und im Gefrierschrank aufbewahrt werden, damit er nicht stattfindet und zum Zeitpunkt der Wartung in den Kunststoffboden eingesetzt wird. Auf diese Weise benötigen wir kein Eis und keine Eiskübel, der CoolerPot benötigt weniger Platz auf dem Tisch, im Lager und im Gefrierschrank als herkömmliche Eiskübel.

ES El CoolerPot es un enfriador de vino de plástico con una bolsa de gel refrigerante en su interior. La bolsa de gel se puede sacar y conservar en el congelador para que no ocupe lugar y se introduce en la base de plástico en el momento del servicio. De esta manera no necesitamos hielo y cubiteras, el CoolerPot ocupa menos espacio en la mesa, en el almacén y en el congelador que las tradicionales cubiteras.

size: 13 x 20 cm
weight: 481 gr
Material: ABS



Light Ice Bucket

EN This acrylic chilling bucket is very light, practical, and strong, and is ideal for the restaurant trade. Easy to store, it is stackable one inside another to occupy minimum space. Easy to carry thanks to the handle

FR Seau en acrylique. Léger, pratique et résistant aux changements de température. Idéal pour le service en restauration. Empilable pour un encombrement minimum.

IT Il Secchiello Ghiaccio Light, leggero, pratico e resistente, è un accessorio ideale per il mondo della ristorazione. Il suo design innovativo e dalle linee semplici lo rendono un metodo molto attraente di esposizione e conservazione della temperatura della bottiglia di vino, ideale per manifestazioni e degustazioni. Realizzato in plastica acrilica ad alta resistenza che garantisce robustezza e leggerezza. Facile da riporre, è impilabile per occupare il minimo spazio.

ES Der Flaschenkühler aus Acryl-Kunststoff ist leicht, praktisch und resistent. Eine ideale Ergänzung für die Welt der Gastronomie. Sie sind stapelbar und leicht zu verstauen, so dass sie nicht viel Raum brauchen.

DE Cubitera de plástico ligera, práctica y resistente, un complemento ideal para el mundo de la hostelería. Fácil de guardar y apilable una dentro de otra para ocupar el mínimo espacio.

size: ø 19,5 x 21 cm

weight: 410 gr

Material: Polystyrene (PS)



Light

Thin walls of high strength plastic with the lowest possible weight

Easy Storage

stackable one inside another to occupy minimum space.



Customizable space

standard print area 75 x 75 mm
standard print area 30 x 120 mm
Other measures upon request



4.304.05
Rosé
PS



4.304.09
Transparent
PS



4.304.00
White
PS



4.304.01
Black
PS



Ice Bucket Tangent



Handle

Easy to carry with its base handle.



Customizable space

standard print area 75 x 75 mm
standard print area 30 x 120 mm
Other measures upon request

EN This acrylic chilling bucket is very light, practical and strong. Easy to store and stack one inside the other to occupy minimal space. Provided with a handle in its bottom for easy carriage.

FR Seau en acrylique. Très léger et pratique grâce à sa poignée qui permet de saisir le seau à la base et ainsi faciliter le service.

IT Il Secchiello Ghiaccio Tangent di Pulltex leggero e pratico, è composto con una resistente plastica acrilica che garantisce robustezza e leggerezza. Il suo design innovativo e dalle linee semplici lo rendono un metodo molto attraente di esposizione e conservazione della temperatura della bottiglia di vino, ideale per manifestazioni o degustazioni. Il Secchiello Ghiaccio Tangent ha un manico alla base per consentire un facile trasporto. Facile da riporre, è impilabile per occupare il minimo spazio.

DE Sehr leichter, praktischer und resistenter Eimer aus Acryl-Kunststoff. Ineinander stapelbar und dadurch leicht zu lagern. Verfügt über einen Griff an der Basis um den Transport zu erleichtern.

ES Cubitera de plástico ligera, práctica y resistente. Fácil de guardar y apilable una dentro de otra para ocupar el mínimo espacio. Dispone de agarradera en su base para facilitar su transporte.



4.314.11
Rosé
PS



4.314.00
Transparent
PS



4.314.02
White
PS



4.314.01
Black
PS

size: ø 20 x 23 cm
weight: 410 gr
Material: Polystyrene (PS)





Vista ^{Ice Bucket} Prima

EN "Vista Prima" ice bucket. One bottle capacity. Resistant to impacts and changes in temperature. Lightweight and easy to transport thanks to its handles. Its curved base allows the perfect positioning of the bottle inside. Manufactured in Polystyrene (PS). Model and design registered

FR Seau "Vista Prima". Capacité 1 bouteille. Résiste aux chocs et aux changements de température. Léger et facile à porter grâce à ses 2 poignées. Sa base bombée évite aux bouteilles de glisser. Idéal pour un assortiment avec la vasque "Vista". Matière : Polystyrene (PS). Dessin & modèle déposé.

IT Secchiello "Vista Prima" per 1 bottiglia. Resistente agli urti ed ai cambiamenti di temperatura. Leggero e facile da trasportare grazie ai suoi manici. La forma ovale consente il posizionamento perfetto della bottiglia al suo interno. Materiale Polistirene (PS). Design registrato.

DE "Vista Prima" Eiskübel. Kapazität für 1 Flasche Resistent gegen Stöße und Temperaturschwankungen. Leicht und einfach zu transportieren Dank seiner praktischen Griffe. Durch die gebogene Basis wird eine perfekte Positionierung der Flasche ermöglicht. Hergestellt aus Polymethylmethacrylat (PMMA) und Polystyrol. Registriertes Design.

ES Cubitera "Vista Prima". Capacidad para 1 botella. Resistente a impactos y cambios de temperatura. Ligera y fácil de transportar gracias a sus asas. Su base curva permite la perfecta ubicación de la botella en su interior. Fabricada en Polistireno (PS). Diseño y modelo registrado.

Handles

Side handles to facilitate transport



Adapted base

Its bubble shape allows the bottle to always be perfectly positioned



Customizable space

standard print area 75 x 75 mm
standard print area 50 x 120 mm
Other measures upon request

size: 22 x 20 x 23 cm

weight: 585 gr

Material: Polystyrene (PS)



Rosé

4.361.07 | PS



Transparent

4.361.10 | PS



White

4.361.12 | PS

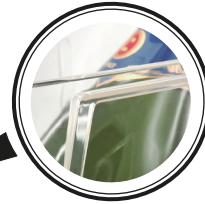


Black

4.361.11 | PS



Ice Bucket Quadratta



Handles

Side handles to facilitate transport



Slanted base

Inclined base to best exposure of the bottle.

Customizable space

standard print area 65 x 170 mm
Other measures upon request



Transparent
4.362.10 | PS



White
4.362.12 | PS



Black
4.362.11 | PS



EN Ice bucket for 1 bottle. Resistant to impacts and temperature changes. Lightweight and easy to transport thanks to its handles. Its flattened shape offers a large marking space. Manufactured in Polystyrene (PS). Model and design registered.

FR Seau "Quadratta". Capacité 1 bouteille. Résiste aux chocs et aux changements de température. Léger et facile à porter grâce à ses 2 poignées. Sa forme carrée offre une grande surface d'impression. Matière : polystyrène (PS). Dessin & modèle déposé.

IT Secchiello Quadrato per 1 bottiglia. Resistente agli urti ed ai cambiamenti di temperatura. Leggero e facile da trasportare grazie ai suoi manici. La sua forma offre uno spazio maggiore per la personalizzazione. Materiale polistirene (PS). Design registrato.

DE Quadratischer Eiskübel für 1 Flasche. Resistent gegen Stöße und Temperaturschwankungen. Leicht und einfach zu transportieren Dank seiner praktischen Griffe. Durch die Quadratische Form bieten sich grössere Druckflächen für Ihre Werbebotschaft. Hergestellt aus Polystyrol (PS). Registriertes Design.

ES Cubitera para 1 botella. Resistente a impactos y cambios de temperatura. Ligera y fácil de transportar gracias a sus asas. Sus caras planas ofrecen un gran espacio de marcaje. Fabricada en Poliestireno (PS). Diseño y modelo registrado.

size: 20 x 20 x 24 cm
weight: 600 gr
Material: Polystyrene (PS)

Ecologic R-Ice Bucket



Screw closure

Quick thread for fast assembly of the part



Plastic Cover

Good dimensional stability,
high abrasion resistance.
Fine grain finish.



Customizable space

standard print area 75 x 75 mm
standard print area 30 x 120 mm
Other measures upon request

Ecologic Product

Made with rice
husk



Our commitment
Take care of
the environment



with a World rice production of 750 million tonnes / Year and 20% is HUSK

100% ECO



Optional eco message printing

reusing rice husks to reduce the use of plastics



EN The new individual ice bucket is made of 100% biodegradable plastic material derived from rice husk. Environmentally friendly, 100% ecological and biodegradable product. Make your events with a respect to our planet. Capacity of 1 Bottle.

FR Le nouveau seau individuel est composé à 100 % de matières biodégradables à base de balle de riz. Un produit écologique et très respectueux de l'environnement, pour la préservation de notre planète. Contenance de 1 bouteille.

IT Il nuovo Secchiello individuale è realizzato in materiale plastico proveniente dalla lolla di riso. Un prodotto 100% ecologico e biodegradabile, molto attento all'ambiente. Rendi i tuoi eventi rispettosi del nostro pianeta. Capacità di 1 bottiglia.

DE Der neue individuelle Flaschenkühler ist aus 100% biologisch abbaubarem Kunststoff aus Reishülsen hergestellt. Umweltfreundliches, 100% ökologisches und biologisch abbaubares Produkt. Machen Sie Ihre Veranstaltungen mit Respekt für unseren Planeten.

ES La nueva cubitera individual está realizada en un material plástico 100% biodegradable proveniente de la cascara del arroz. Un producto 100% ecológico y biodegradable muy cuidadoso con el medioambiente. Haga que sus eventos sean respetuosos con nuestro planeta. Capacidad 1 botella.

size: ø 21 x 23 cm
weight: 355 gr
capacity: 1 Bottle.

4.363.00
Rice Bio



Recycled Ice Bucket

EN Ice bucket made from 100% recycled plastic bottles. Capacity for 1 bottle. Resistant to impacts and temperature changes. Its base allows the perfect location of the bottle inside. Design and registered model.

FR Seau à glace fabriqué à partir de bouteilles en plastique 100 % recyclées. Capacité pour 1 bouteille. Résistant aux chocs et aux changements de température. Sa base permet le parfait positionnement de la bouteille à l'intérieur. Dessin et modèle déposé.

IT Secchiello per il ghiaccio realizzato con bottiglie di plastica riciclata al 100%. Capacità per 1 bottiglia. Resistente agli urti e agli sbalzi di temperatura. La sua base permette la perfetta collocazione della bottiglia all'interno. Design e modello depositato.

DE Eiskübel aus 100 % recycelten Plastikflaschen. Kapazität für 1 Flasche. Beständig gegen Stöße und Temperaturschwankungen. Sein Boden ermöglicht die perfekte Platzierung der Flasche im Inneren. Geschmacksmuster und eingetragenes Modell.

ES Cubitera 100% material reciclado de botellas de plástico. Capacidad para 1 botella. Resistente a impactos y cambios de temperatura. Su base permite la perfecta ubicación de la botella en su interior. Diseño y modelo registrado.

size: ø 21 x 23 cm
baseline: ø12,5 cm
weight: 500 gr
Material: PET



Customizable space

standard print area 75 x 75 mm
standard print area 40 x 120 mm
Other measures upon request



**MATERIAL
100% FROM
RECYCLED
PLASTIC
BOTTLES
MADE IN EUROPE**



4.364.00
Transparent
PET



Recycled Chilling Bowl



EN Ice bucket made from 100% recycled plastic bottles. Capacity for 5 bottles. Resistant to impacts and temperature changes. Its base allows the perfect location of the bottles inside. Design and registered model.

FR Seau à glace fabriqué à partir de bouteilles en plastique 100 % recyclées. Capacité pour 5 bouteilles. Résistant aux chocs et aux changements de température. Son socle permet le placement parfait des bouteilles à l'intérieur. Dessin et modèle déposé.

IT Secchiello per il ghiaccio realizzato con bottiglie di plastica riciclata al 100%. Capacità per 5 bottiglie. Resistente agli urti e agli sbalzi di temperatura. La sua base permette la perfetta collocazione delle bottiglie all'interno. Design e modello depositato.

DE Eiskübel aus 100 % recycelten Plastikflaschen. Kapazität für 5 Flaschen. Beständig gegen Stöße und Temperaturschwankungen. Sein Boden ermöglicht die perfekte Platzierung der Flaschen im Inneren. Geschmacksmuster und eingetragenes Modell.

ES Cubitera 100% material reciclado de botellas de plástico. Capacidad para 5 botella. Resistente a impactos y cambios de temperatura. Su base permite la perfecta ubicación de las botellas en su interior. Diseño y modelo registrado.



100% Recycled

Ice bucket made from 100% recycled plastic bottles.



Customizable space

standard print area 100 x 160 mm
Other measures upon request

4.365.00
Transparent
PET



**MATERIAL
100% FROM
RECYCLED
PLASTIC
BOTTLES
MADE IN EUROPE**



Ice Bucket Modern

EN This acrylic chilling bucket is very light, practical and sturdy, and is ideal for the restaurant trade. Elegant appearance and innovative design. Easy to drain. Convenient to store: can be stacked one into another.

FR Seau acrylique translucide ou opaque. Léger, pratique et résistant aux changements de température. Idéal pour le service en restauration. Fonctionnel, permet de déverser le contenu du seau sans éclaboussures. Design élégant et innovant. Empilable pour un encombrement minimum. Dessin & modèle déposé.

IT Il Secchiello Ghiaccio Modern di Pulltex ha una forma elegante e innovativa ed è anche estremamente funzionale poiché aiuta lo svuotamento del liquido rimasto al suo interno. Ha due manici laterali per una presa migliore. Il Secchiello Ghiaccio Modern di Pulltex, leggero, pratico e resistente, è un complemento ideale per il mondo della ristorazione. Il suo design innovativo e dalle linee semplici lo rendono un metodo molto attraente di esposizione e conservazione della temperatura della bottiglia di vino, ideale per manifestazioni o degustazioni. Facile da riporre, è impilabile per occupare il minimo spazio.

DE Der Kunststoff-Flaschenkühler ist leicht und widerstandsfähig in der Praxis und deshalb ideal als Ergänzung für die Welt der Gastronomie. Sein schlankes Design ist funktional und innovativ. Dadurch lässt sich die Flüssigkeit einfacher entleeren. Es ist stapelbar und einfach in der Aufbewahrung.

ES La cubitera de plástico translúcido es muy ligera, práctica y resistente, un complemento ideal para el mundo de la hostelería. Su diseño elegante e innovador además es funcional porque ayuda al vaciado del líquido de su interior. Fácil de guardar y apilable una dentro de otra para ocupar el mínimo espacio.

size: ø 21 x 24 cm
weight: 800 gr
Material: Polystyrene (PS)
Polypropylene (PP)

Extra thickness

Thanks to its extra wall size, the ice bucket has great resistance

Drain System

Mouth shape for easy emptying and drying.

imitation wood pvc

Made of plastic with imitation wood finish. High resistant.

Handles

Side handles to facilitate transport

Customizable space

standard print area 75 x 75 mm
standard print area 40 x 120 mm
Other measures upon request



4.301.12
Gold
PP



4.301.10
Silver
PP



4.301.00
Translucid
PS



4.301.01
Black
PP



4.301.18
Baobab
PP



4.301.19
Wood
PP



4.301.20
White
PP



4.301.30
Black
PP

Other
Colours
Upon
Request

**NEW
ARRIVAL**
**MADE OF
RECYCLED
MATERIAL**



Ice Bucket Bicolour

Easy Storage

stackable one inside another to occupy minimum space.



Slanted base

Inclined base to best exposure of the bottle.

Customizable space

standard print area 75 x 75 mm
standard print area 30 x 120 mm
Other measures upon request

EN A bucket made in two colors. The contrast between inner and outer color will highlight the bottle inside and will give more importance to the brand. Easy to store and stack one inside the other to occupy minimal space

FR Modèle original, Bicolore. Sa base étroite occupe peu de place sur la table. Empilable pour un encombrement minimum.

IT Secchiello realizzato a due colori. La differenza di colore tra esterno ed interno mette in risalto la bottiglia, dando così maggior risalto alla marca. Facile da riporre, consente di essere impilato per occupare il minimo spazio.

DE Eimer zwei farbig entworfen um das Produkt hervorzuheben. Der Unterschied der Innen- und Aussenfarbe bringt die Visualisation der Flasche zur Geltung und ermöglicht somit eine grössere Präsenz der Marke. Ineinander stapelbar und dadurch leicht zu lagern.

ES Cubitera realizada en dos colores para resaltar el producto, la diferencia de color exterior-interior resalta la visualización de la botella, ofreciendo una mayor presencia de marca. Fácil de guardar y apilable una dentro de otra para ocupar el mínimo espacio.



Other Colours Upon Request

4.313.01 | Black/White
■ PS
□

4.313.02 | Black/Gold
■ PS
■

4.313.00 | White/Black
■ PS
□

size: ø 20,5 x 21,5 cm
weight: 500 gr
Material: Polystyrene (PS)



360° Ice Bucket

EN This ice bucket made of transparent acrylic plastic is very light, practical and strong. It is suitable for the restaurant trade. Its entire surface can be printed with excellent photographic quality and it can be easily stored nested one inside the other to save space.

FR Seau en acrylique. Léger et résistant aux changements de température. Idéal pour le service en restauration. Ce seau permet également un marquage 360° pour une mise en valeur de votre communication. Empilable pour un minimum d'encombrement.

IT Il Secchiello Ghiaccio 360° in plastica acrilica ad alta resistenza, assai leggero, pratico e resistente, è un accessorio ideale per il mondo della ristorazione. Il suo design innovativo e dalle linee semplici lo rendono un metodo molto attraente di esposizione e conservazione della temperatura della bottiglia di vino, ideale per manifestazioni o degustazioni. Facile da riporre, è impilabile per occupare il minimo spazio. Il Secchiello Ghiaccio 360° di Pulltex ha la possibilità di essere stampato con qualità fotografica su tutta la superficie esterna.

DE Kunststoffeimer sehr leicht, praktisch und langlebig aus transparentem Acryl. Dieser Kühl-Eimer bietet die Möglichkeit, diesen mit fotografischer Qualität zu bedrucken und somit seine gesamte Außenfläche Ihnen dient Ihre Botschaft modern und elegant zu präsentieren. Leicht zu lagern und stapelbar.

ES Cubitera de plástico acrílico transparente muy ligera, práctica y resistente. Un complemento ideal para el mundo de la hostelería. Esta cubitera ofrece la posibilidad de ser impresa con calidad fotográfica y en la totalidad de su superficie externa. Fácil de guardar y apilable una dentro de otra para ocupar el mínimo espacio.

size: ø 20,5 x 23 cm
weight: 350 gr
Material: Polypropylene (PP)

Easy Storage

stackable one inside another to occupy minimum space.



Mold printing

Molding the impression in the ice bucket creates a joint that reveals the color of the material

Other Colours Upon Request



Upon request | ■ Black
■ ■ ■ CMYK
All printed image

Upon request | □ White
■ ■ ■ CMYK
All printed image



Lid Ice Bucket



Rear Fixing

The lid is held without having to hold it by hand



EN The first ice bucket on the market with lid makes your advertisement even more visible while preserving the cold inside the bucket for longer. The lid can be opened and closed with a single finger. It is stackable with lid open.

FR Le premier seau à glace avec couvercle permet une plus grande visibilité pour votre communication tout en préservant plus longtemps le froid à l'intérieur du seau. Le couvercle peut être ouvert et fermé avec un seul doigt. Les seaux peuvent être empilés en maintenant le couvercle ouvert.

IT Il primo secchiello del ghiaccio con coperchio sul mercato rende la tua pubblicità ancora più visibile preservando più a lungo il freddo all'interno. Il coperchio può essere aperto e chiuso con un solo dito. Può essere impilato con il coperchio aperto.

DE Der erste Eiskübel mit Deckel auf dem Markt macht Ihre Werbung noch sichtbarer und bewahrt die Kälte im Inneren des Eimers länger. Der Deckel lässt sich mit einem einzigen Finger öffnen und schließen. Er ist mit geöffnetem Deckel stapelbar.

ES La primera cubitera con tapa del mercado hace su publicidad aún más visible a la vez que preserva el frío dentro de la cubitera por más tiempo. La tapa se puede abrir y cerrar con un solo dedo. Se puede apilar con la tapa abierta.

Better temperature conservation

Easy Storage

stackable one inside another to occupy minimum space.



Customizable space

standard print area 75 x 75 mm
standard print area 30 x 120 mm
standard print area \varnothing 80 mm
Other measures upon request



□ 4.340.00
■ White/Black

size: \varnothing 22,3 x 24 cm
weight: 575 gr
Material: Polystyrene (PS)



Chilling Bowl Trapezette "Mini"

EN Chilling Bowl with capacity for 2/3 bottles, its entire surface can be printed with excellent photographic quality. Easy to carry thanks to the handles on each side. Made of highly resistant plastic.

FR Vasque 2/3 bouteilles. Très légère et pratique grâce à ses deux poignées qui permettent de saisir la vasque à la base et ainsi faciliter le service. Personnalisation en 360° pour une mise en valeur de votre communication.

IT Spumantiera capacità 2/3 bottiglie con possibilità di stampa in quadricromia a 360°. Il suo design innovativo e dalle linee semplici lo rendono un metodo molto attraente di esposizione e conservazione. Ha due manici laterali per una presa migliore. Realizzato in plastica ad alta resistenza.

DE Eimer mit Platz für bis zu 2/3 Flaschen. Sein innovatives Design verwandelt den Eimer in einer attraktiven Methode für die Exposition und Aufbewahrung. Die zwei Griffe an den Seiten gewähren einen besseren Halt. Hergestellt aus Kunststoff mit hoher Resistenz.

ES Cubitera con capacidad para 2/3 botellas con impresión 360° en cuatricromía. Su diseño innovador y de líneas simples la convierten en un atractivo método de exposición y conservación de botellas, dispone de dos agarraderas en los laterales para una mejor sujeción. Realizada en plástico de alta resistencia.



Handles

Side handles to facilitate transport

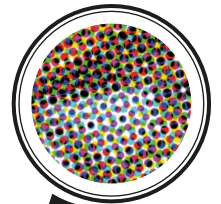


Slanted base

Inclined base to best exposure of the bottle.

Transfer printed

Transfer mould printing for a complete customization of the bowl



Customizable space

standard print area 100 x 130 mm
Other measures upon request



**360°
printed**

Upon request
■ ■ ■ ■ CMYK
All printed image
PP

size: 32 x 22 x 23 cm
weight: 650 gr
Material: Polystyrene (PS)
Polypropylene (PP)

**Other
Colours
Upon
Request**



4.302.00 | □ Transparent
PS



4.302.02 | □ White
PS



4.302.01 | ■ Black
PS



Chilling Bowl Trapezozze



EN Chilling Bowl with capacity for up to 4 bottles, its entire surface can be printed with excellent photographic quality. Its innovative and simple design enables simultaneous chilling of several bottles. Easy to carry thanks to the handles on each side. Made of highly resistant plastic.

FR Vasque 4 bouteilles. Très légère et pratique grâce à ses deux poignées qui permettent de saisir la vasque à la base et ainsi faciliter le service. Personnalisation en 360° pour une mise en valeur de votre communication.

IT Spumantiera capacità 4 bottiglie con stampa quadricromia 360°. Il suo design innovativo e dalle linee semplici lo rendono un metodo molto attraente di esposizione e conservazione di più bottiglie contemporaneamente. Ha due manici laterali per una presa migliore. Realizzato in plastica ad alta resistenza.

DE Eimer mit Platz für bis zu 4 Flaschen. Sein innovatives Design verwandelt den Eimer in einer attraktiven Methode für die Exposition und Aufbewahrung von mehreren Flaschen gleichzeitig. Die zwei Griffe an den Seiten gewähren einen besseren Halt. Hergestellt aus Kunststoff mit hoher Resistenz.

ES Cubitera con capacidad para 4 botellas con impresión 360° en cuatricromía. Su diseño innovador y de líneas simples la convierte en un atractivo método de exposición y conservación de varias botellas al mismo tiempo, dispone de dos agarraderas en los laterales para una mejor sujeción. Realizada en plástico de alta resistencia.

Mold printing

Molding the impression in the ice bucket creates a joint that reveals the color of the material



Customizable space

standard print area 160 x 100 mm
Other measures upon request



Other Colours Upon Request

360° printed

Upon request
■ ■ ■ ■ CMYK
All printed image
PP

4.311.00 | Transparent PS

4.311.02 | White PS

4.311.01 | Black PS

size: 38,5 x 28 x 25 cm
weight: 950 gr
Material: Polystyrene (PS)
Polypropylene (PP)



Chilling Bowl Vista

EN The oversized "Vista" transparent chilling bowl is the biggest chiller in the collection, with a six bottle capacity.

FR Vasque "Vista". Capacité maxi: 6 bouteilles. Résiste aux chocs et aux changements de température.

IT La spumantiera "Vista" è la più grande della collezione, con una capacità fino a 6 bottiglie.

DE Eiseimer-Flaschenkühler "Vista" aus verfügt über zeitgenössisches und funktionelles Design in "V" Form für 6 Flaschen.

ES La cubitera "Vista" gigante esta realizada en plástico transparente y es la cubitera más grande de la colección, con capacidad para 6 botellas.



size: 45 x 29,5 x 23,5 cm
weight: 1400 gr
Material: Polystyrene (PS)
Polyméthyl Méthacrylate (PMMA)



Slanted base

Allow the bottle to be positioned in the best possible way to be exposed



Handles

Handles on its sides to facilitate the transport of the ice bucket

Customizable space

standard print area 160 x 80 mm
Other measures upon request



4.360.00 | Transparent
PMMA



4.360.10 | White
PS



4.360.01 | Black
PMMA



**WOOD
EFFECT**



4.360.12 | Ebony
PS



4.360.23 | Rosé
PS



Led Light

for Vista Chilling Bowl



104.359.00 | □

magnetic attachable led light

EN The multi-colour ice bucket led light includes batteries, remote control, and an adhesive magnet to attach only to the VISTA CHILLING BOWL ice bucket. It does not fit other models of ice buckets.

FR L'éclairage LED multicolore pour vasque comprend un dispositif lumineux, une télécommande avec piles et un aimant adhésif à fixer. Posez simplement l'aimant et le dispositif lumineux sous la base de la vasque, les LED seront activés avec la télécommande incluse.

IT La luce a led multicolor include batterie, telecomando e un magnete adesivo da attaccare esclusivamente al modello SPUMANTIERA VISTA. Non si adatta ad altri modelli di secchiello per il ghiaccio.

DE Die mehrfarbige Eiskübel-LED-Leuchte enthält Batterien, eine Fernbedienung und einen Haftmagneten, der nur am VISTA CHILLING BOWL Eiskübel befestigt werden kann. Er passt nicht auf andere Eiskübelmodelle.

ES La luz led multicolor para cubitera incluye pilas, mando a distancia y un imán adhesivo para colocar en el modelo de cubitera VISTA CHILLING BOWL únicamente.



Metallic Slim Ice Bucket

EN Metallic ice bucket, light, practical and resistant. Its handle allows you to carry it easily. Designed to maintain the temperature of wine bottles or sparkling wine bottles, it can be nested one inside another and has a very high-quality finishing.

FR Seau en métal. Léger, pratique et résistant, le seau dispose d'une anse pour faciliter son transport. Créé pour maintenir la température de bouteilles de vin ou vins pétillants. Empilable pour un minimum d'espace.

IT Secchiello in metallo, leggero, pratico e resistente, il secchiello dispone di un manico per facilitare il suo trasporto. Progettato per mantenere la temperatura di vino o spumate. È un prodotto impilabile e con rifiniture di qualità.

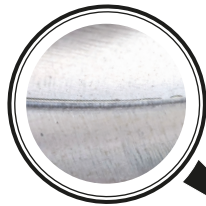
DE Leichter und resistenter Flaschenkühler aus Metall mit Griff für einfachen Transport. Entworfen um weinflaschen.

ES Cubitera metálica, ligera, práctica y resistente. Dispone de un asa para facilitar su transporte. Está diseñada para mantener la temperatura de botellas de vino o espumosos. Es un producto apilable con unos acabados de gran calidad.



Handles

Mobil metal handle for easy use



Varnished

Varnished inside to prevent rust.



**360°
printed**

Customizable space

standard print area 75 x 75 mm
standard print area 30 x 120 mm
Other measures upon request

Easy Storage

stackable one inside another to occupy minimum space.

size: ø18 x 21,5 cm
weight: 340 gr
cap.: 3,5 liters



4.299.00 | White



4.299.02 | Iron



Upon request |
All printed image



Metallic Ice Bucket

Bottle Opener

Incorporates a bottle opener into one of the handle holders



Easy Storage

stackable one inside another to occupy minimum space.

Varnished

Varnished inside to prevent rust.



Handles

Mobil metal handle for easy use



EN Metallic ice bucket, light, practical and resistant. Its handle allows you to carry it easily. Designed to maintain the temperature of several beer, soft drink bottles or wine bottles, it can be nested one inside another and has a very high-quality finishing.

FR Seau en métal. Léger, pratique et résistant, le seau dispose d'une anse pour faciliter son transport. Créé pour maintenir la température de quelques bouteilles de bière, de rafraîchissement ou de vin. Pratique, il est muni d'un ouvre bouteille et dispose d'une anse pour faciliter le transport. Empilable pour un minimum d'espace.

IT Secchiello in metallo, leggero, pratico e resistente, il secchiello dispone di un manico per facilitare il suo trasporto. Progettato per mantenere la temperatura di birra e bibite varie. È un prodotto impilabile e con rifiniture di qualità.

DE Leichter und resistenter Flaschenkühler aus Metall mit Griff für einfachen Transport. Entworfen um mehrere Bierflaschen oder andere Erfrischungsgetränke kühl zu halten.

ES Cubitera metálica, ligera, práctica y resistente. Dispone de un asa para facilitar su transporte. Está diseñada para mantener la temperatura de varias botellas de cerveza, refresco o vino. Es un producto apilable con unos acabados de gran calidad.

Customizable space

standard print area 75 x 75 mm
standard print area 30 x 120 mm
Other measures upon request

size: ø 23 x 18 cm
weight: 440 gr
cap.: 5 liters



4.310.00 | Aluminium Printing

4.310.01 | Black

4.310.02 | Wood Printing

Upon request | All printed image



Cardboard MySpittoon

EN Spittoon with laminated cardboard to contain liquids and store them in a hygienic way. Its removable top lid makes cleaning easy and has a capacity of 33 cl.

FR Crachoir en carton plastifié pour une utilisation individuelle et hygiénique en respectant les gestes barrières. Son couvercle supérieur amovible facilite le nettoyage. Contenance: 33 cl.

IT Sputacchiera monouso ha un corpo in cartone laminato per contenere liquidi e conservarli in modo igienico. Il suo coperchio superiore rimovibile facilita la pulizia e ha una capacità di 33 cl.

DE Spucknapf mit laminiertem Karton, um Flüssigkeiten aufzunehmen und hygienisch aufzubewahren. Der abnehmbare obere Deckel erleichtert die Reinigung und hat eine Kapazität von 33 cl.

ES Escupidera con cuerpo de carton con laminado para contener líquidos y almacenarlos de una forma higiénica. Su tapa superior desmontable facilita la limpieza y con capacidad de 33 cl.



Dosing Cap

The lid allows to empty the wine without spashing.



Marks for Closure

Folds that secures the lid to the container.



104.530.01:
size: 17 x ø 9 cm
weight: 28 gr
capacity: 33 cl.

104.532.01:
size: 15 x ø 9 cm
weight: 18 gr
capacity: 33 cl.

Cardboard material

Printed on the outside.
Protective foil for liquids
Excellent compressive strength

**360°
printed**



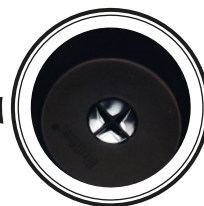
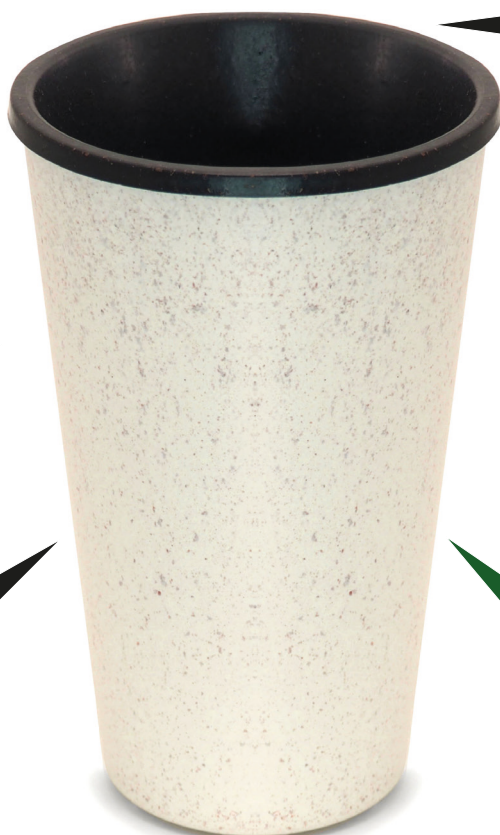
104.530.01 | CMYK
All printed image



104.532.01 | CMYK
All printed image



MyEcoSpittoon ^{Rice Husk}



Dosing Cap

The lid allows to empty the wine without spashing.

EN The new individual spittoon is made of 100% biodegradable plastic material derived from rice husk. Environmentally friendly, 100% ecological and biodegradable product. Make your events with a respect to our planet. Capacity of 30 cl.

FR Le nouveau crachoir individuel est composé à 100 % de matières biodégradables à base de balle de riz. Un produit écologique et très respectueux de l'environnement, pour la préservation de notre planète. Contenance de 30 cl.

IT La nuova sputacchiera individuale è realizzata in materiale plastico proveniente dalla lolla di riso. Un prodotto 100% ecologico e biodegradabile, molto attento all'ambiente. Rendi i tuoi eventi rispettosi del nostro pianeta. Capacità di 30 cl.

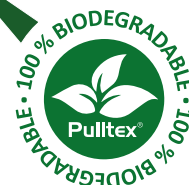
DE Der neue individuelle Speifontäne ist aus 100% biologisch abbaubarem Kunststoff aus Reishülsen hergestellt. Umweltfreundliches, 100% ökologisches und biologisches abbaubares Produkt. Machen Sie Ihre Veranstaltungen mit Respekt für unseren Planeten. Kapazität 30 cl.

ES La nueva escupidera individual está realizada en un material plástico 100% biodegradable proveniente de la cascara del arroz. Un producto 100% ecológico y biodegradable muy cuidadoso con el medioambiente. Haga que sus eventos sean respetuosos con nuestro planeta. Capacidad 30 cl.

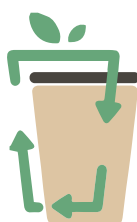


Ecologic Product

Made with rice husk



ECO FRIENDLY PRODUCT



eco
Spittoon

size: 14,5 x ø 9 cm
weight: 55 gr
capacity: 33 cl.

104.537.00 | MyEcoSpittoon Natural



complement for tasting Spittoons

EN This perfect complement for tasting is very easy to store and ideal for events and fairs.

FR Ce crachoir est un complément parfait pour la dégustation est très facile à stocker et idéal pour les événements et les salons.

IT Questo perfetto complemento per la degustazione è molto facile da conservare e ideale per eventi e fiere.

DE Diese perfekte Ergänzung für die Verkostung ist sehr einfach zu lagern und ideal für Veranstaltungen und Messen.

ES Este complemento perfecto para la degustación es muy fácil de almacenar e ideal para eventos y ferias.

A
size: ø 14,5 x 21,5 cm
capacity: 2 L.
PS

B
size: ø 20,5 x 20,5 cm
capacity: 2 L.
INOX

C
size: ø 14,5 x 15,5 cm
capacity: 1 L.
ABS



4.350.01 | ■ Black



4.351.00 | □ Inox



4.352.01 | ■ Black



Stackable Light Spittoon



Easy Storage

stackable one inside another to occupy minimum space.



Light

Thin walls of great resistance to achieve the lowest weight

EN The spittoon is light, practical and resistant. Its top lid has been designed to facilitate the flow of the fluid and prevent it from splashing. This perfect complement for tasting is very easy to store.

FR Crachoir léger, pratique et résistant. Sa partie supérieure facilite l'écoulement du liquide sans générer d'éclaboussures. Un complément incontournable pour vos dégustations. Très élégant et empilable pour un minimum d'espace.

IT Le nostre Sputacchiere sono dei complementi ideali per degustazioni di vino e manifestazioni. Le Sputacchiere Pulltex, togliendo il coperchio sono impilabili, per occupare il minimo spazio.

DE Leichter, praktischer & langlebiger. Der abnehmbare Deckel erleichtert das Einfließen der Flüssigkeit und vermeidet Spritzer. Es ist eine ideale Ergänzung für Weinproben.

ES Escupidera ligera, práctica y resistente. Su tapa superior desmontable está diseñada para facilitar el paso del líquido evitando salpicaduras. Es un complemento ideal para catas. Una vez retirada la tapa es fácil de apilar.

size: ø 19,5 x 21 cm
weight: 470 gr
Material: Polystyrene (PS)
capacity: 250 cl.

Customizable space

standard print area 75 x 75 mm
standard print area 30 x 120 mm
Other measures upon request



104.517.00 | ■ White PS



104.516.00 | ■ Black PS



104.519.00 | ■ White PS



104.518.00 | ■ Black PS



Jute Bag ^{Ecological}

EN Jute bag for 6 bottles of wine or cava, with reinforced cotton handles. Element of transport so necessary and practical that will help you make your brand visible on the street.

FR Sac en jute pour 6 bouteilles de vin ou de crémant, avec poignées renforcées en coton. Idéal pour une communication pérenne, toujours en mouvement. 100 % recyclable.

IT Borsa in iuta per 6 bottiglie di vino o spumante, con manici in cotone rinforzato. Elemento di trasporto così necessario e pratico che ti aiuterà a rendere visibile il tuo marchio per strada.

DE Jutetasche für 6 Flaschen Wein oder Cava, mit verstärkten Baumwollgriffen. Ein so notwendiges und praktisches Transportmittel, das Ihnen hilft, Ihre Marke auf der Straße sichtbar zu machen.

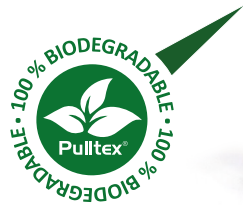
ES Bolsa de yute para 6 botellas de vino o cava, con asas de algodón reforzadas. Elemento de transporte tan necesario y práctico que le ayudará a hacer visible su marca en la calle.

size: 27,5 x 27,5 x 19 cm
weight: 235 gr



Reinforced Handles

Made of double-sided cotton handles



Customizable space

Print area 150 x 150 mm

Jute

Biodegradable
Thick Threads
No ecological damage



4.725.00 | ■ Jute

ECO FRIENDLY PRODUCT



Wine Bags ^{4 or 6 bottles}

Bottle separators

Thanks to the separators the bottles are kept in their correct position



Nylon

Excellent resistance
Excellent tear strength
Water Repellent filament



EN The 4 or 6 bottle nylon or non woven carrying bag is not only practical but gets the name of your brand out on the streets. The bag is made of high resistance 600D nylon with reinforced handles for extra security.

FR Sac à bouteilles. Pratique pour transporter 4 à 6 bouteilles de vin ou de champagne. Idéal pour véhiculer votre communication. Matière 2 options : sac Nylon 600 D haute résistance ou sac non tissé en polypropylène. Nous consulter pour une personnalisation en 360° sur les sacs en polypropylène. (fabrication spéciale avec un minimum de commande)

IT La Borsa Porta Bottiglie Pulltex è utilissima per trasportare facilmente più bottiglie di vino. La Borsa Portabottiglie è confezionata in Nylon 600D ad alta resistenza con manici rinforzati per una maggiore sicurezza anche in caso di bottiglie pesanti. Disponibile in due versioni per 4 e 6 bottiglie di vino o spumante, utile e pratica, consente un'ampia visibilità della marca, durante il trasporto.

DE Nylon oder Vlies Tragtasche, ein notwendiges Element für den praktischen Transport von 4 bis 6 Wein- oder Sektflaschen. Mit dieser Tasche ist ihre Marke immer sichtbar und verstärkt ihre Präsenz auf dem Markt.

ES Bolsa para 4 y 6 botellas de vino o cava confeccionadas en Nylon 600D o non woven, con asas reforzadas. Elemento de transporte tan necesario y práctico que le ayudará a hacer visible su marca en la calle.

Customizable space

4 Bottles print area 50 x 50 mm
6 Bottles print area 70 x 200 mm
6 Bottles print area 100 x 90 mm
Other measures upon request

Non Woven



7.761.00 | Wood Printing 7.761.99 | CMYK

Nylon 600D



4.724.05 (4b) | Burg.
4.726.05 (6b) |



4.724.03 (4b) | Green
4.726.03 (6b) |



4.724.02 (4b) | D.Blue
|



4.724.01 (4b) | Black
4.726.01 (6b) |

4 bot. Nylon 600D
size: 26,3 x 17 x 16,5 cm
weight: 175 gr

6 bot. Nylon 600D
size: 26,3 x 24,5 x 17 cm
weight: 190 gr

6 bot. Non Woven
size: 30 x 26,5 x 18,5 cm
weight: 65 gr



Foil Cutter

3 Blades

Its 3 blades facilitate cutting with less rotation. Stainless Steel.



EN The circular Pulltex foil cutter cuts below the lip of the bottle in one easy motion thanks to the three steel blades around the perimeter. It is the perfect item for a wine server, due to its light weight and manageability.

FR Le coupe capsule Pulltex permet en une pression et un seul mouvement de découper en dessous du goulot grâce à ses 3 roulettes en acier. Matière plastique et acier. Produit breveté.

IT Il taglia capsula Pulltex con pulsante laterale incide la capsula sotto l'imboccatura della bottiglia, con un solo movimento e senza sforzo, grazie alle tre lame di acciaio situate nel suo perimetro interno.

DE Dank der drei Stahlklingen im Innern schneidet der Pulltex Folienschneider mühelos die Folie unterhalb des Flaschenhalses weg. Dieser Artikel ist ideal für Kellner, da es sehr leicht und handlich ist.

ES El cortacápsulas Pulltex con pulsador corta por debajo del gollete de la botella con un solo movimiento y sin esfuerzo gracias a sus tres cuchillas de acero situadas en su perímetro.



Blades

By pressing the button, cut the capsule cleanly and quickly in the correct position under the bottle neck.

Customizable space

standard print area \varnothing 40 mm
Other measures upon request

size: \varnothing 5,6 x 2,2 cm
weight: 20 gr



4.015.00 | White



4.015.01 | Black



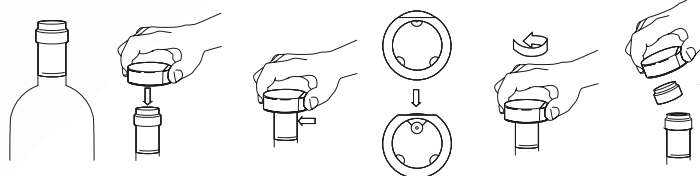
4.015.02 | Blue



4.015.03 | Burgundy



4.015.05 | Green



Stain-proof Waterproof Apron



Adjustables

Adjustable straps and belt for any measures



Material

Waterproof
Stain resistant
Durable

Customizable space

standard print area 200 x 80 mm
Other measures upon request

EN The Pulltex apron (available in 3 sizes) is a must for table service. Waterproof, stain resistant and durable. Includes a sliding belt to accommodate varying heights and a pocket with a place for a pen and a corkscrew, as well as the customary front pocket.

FR 3 modèles de tablier de sommelier pour répondre à vos besoins. Complément indispensable pour le professionnel. Une double poche centrale et 2 compartiments pour le tire-bouchon et le stylo. Hydrofuge et imperméable. Coton 100 %.

IT Il grembiule Pulltex in tre misure è un accessorio irrinunciabile per il servizio al tavolo. Confezionato in tela idrofuga. Comprende un nastro scorrevole per adattare la parte superiore a diverse altezze e uno scomparto per penne e cavatappi, oltre all'abituale tasca centrale.

DE Die Service-Schürze Pulltex in 3 Größen, ist ein unentbehrliches Accessoire für den Dienst am Tisch und in der Küche. Hergestellt aus imprägniertem Gewebe (völlig Wasser- abstoßend), widerstandsfähig gegen Flecken und von langer Lebensdauer.

ES Delantal en 3 medidas, un accesorio imprescindible para el servicio en mesa. Confeccionado en tela hidrofugada (impermeable), resistente a las manchas. Su diseño incluye una cinta corredera para adaptar a diferentes alturas de persona y un bolsillo central.



104 x 100 cm



80 x 72 cm



68 x 72 cm



90 x 85 cm

4.713.00 | ■ SOMMELIER

4.712.00 | ■ MAITRE

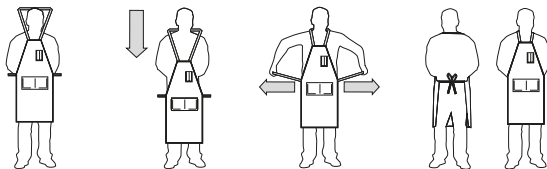
4.711.00 | ■ WAITER

10.051.00 | ■ JEANS

A
104 x 100 cm

B
80 x 72 cm

C
68 x 72 cm



Non-woven Glass Holder

EN Glass holder manufactured in resistant "non-woven" material with large printing area, perfect for placing your logo and be noticed during wine tasting or events. It will allow you to carry the cup effortlessly maintaining your hands free.

FR Porte-verre. Ce kit « mains-libres » est idéal pour les dégustations, les manifestations événementielles et les salons professionnels. Un support de communication efficace pour une promotion publicitaire non figée. Textile «nonwoven».

IT Portacalice in tessuto non tessuto, complemento ideale per promuovere il tuo brand a degustazioni ed eventi, in particolare se si svolgono in piedi. Consente di portare facilmente il proprio calice di vetro e di avere le mani libere.

DE Glashalter aus widerstandsfähigem "Vlies" Material mit großem Druckbereich, ideal für die Platzierung Ihres Logos um bei der Weinprobe oder Veranstaltungen, Ihr Produkt zu kommunizieren.

ES Colgador para copas de vino fabricado en textil "nonwoven", ideal como complemento para promocionar su marca en ferias, catas y eventos donde la degustación del vino se realiza de pie gracias a su amplia superficie de impresión.

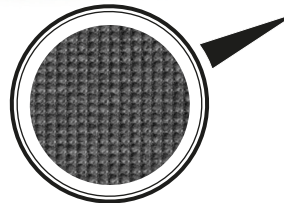


size: 19,7 x 15,5 x 5 cm
weight: 10 gr



Clothing Protector

For long glass. Avoid contact between the neck of the glasses and clothing.

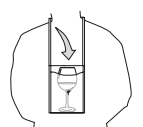
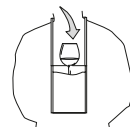


Non-textile material

Lightness without losing resistance and good finishes



Other Colours Upon Request



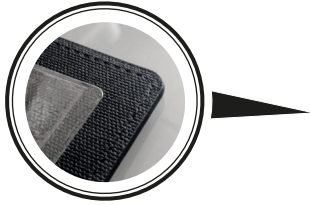
Customizable space

standard print area 130 x 150 mm
Other measures upon request

4.728.00 | Glass holder Black



A4 size Wine Menu



Hard plastic

Rigid plastic on the outside and 4 transparent sheets on the inside



EN The new Pulltex "Wine Menu" has an exclusive design using textured PVC covers and four transparent plastic sleeves to hold standard wine list in A4 size (29.7x21cms).

FR Conçu dans une matière innovante, Le nouveau «Porte-Menus» de PULLTEX est en PVC texturé avec 4 feuillets transparents pour loger les menus en format A4 (29,7 X 21 cm).

IT La nuova Carta dei Vini Pulltex ha un design esclusivo con copertina in PVC, è fornito di 4 pagine in plastica trasparente per contenere la carta dei vini di dimensioni A4.

DE Das neue Pulltex "Wine Menu" hat ein exklusives Design mit strukturierter Oberfläche und vier transparenten Plastikhüllen, um Ihre Weinkarte in der Größe A4 (29.7x21cms) zu präsentieren.

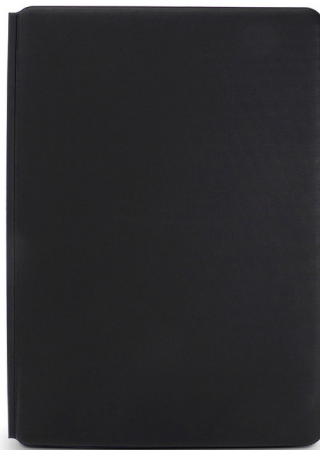
ES El nuevo portamenús Pulltex "Menu Holder" es un exclusivo diseño con cubiertas texturizadas de PVC y cuatro fundas transparentes para alojar hojas de tamaño estandarizado Din A4 (29,7 x 21 cm).

size: 31,9 x 22 x 1,5 cm
weight: 10 gr

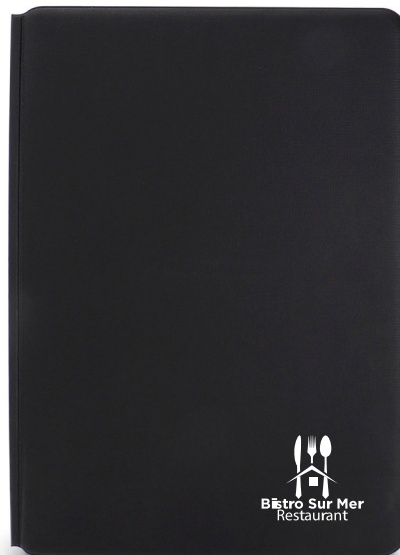
4 transparent sheets

Customizable space

standard print area 190 x 230 mm
Other measures upon request



4.729.00 | Menu Holder Black



EN This glass is made manually by master craftsmen who perform all the steps of the glass manufacturing process.

FR Ce verre est fabriqué manuellement par des maîtres artisans qui effectuent toutes les étapes du processus de fabrication du verre.

IT Questo bicchiere è realizzato manualmente da maestri artigiani che eseguono tutte le fasi del processo di lavorazione del vetro.

DE Dieses Glas wird manuell von Handwerksmeistern hergestellt, die alle Schritte des Glasherstellungsprozesses ausführen.

ES Este vidrio está elaborado de forma manual por maestros artesanos que realizan todos los pasos del proceso de fabricación del vidrio.

Machine Blown

Injecting air into a piece of molten glass through a machine creating a bubble.



Laser Engraving

Cut out a part of the material, leaving a cavity that reveals a design,



nature®
organic crystal



4.695 | **Beer**
40 cl.
ø 9,8 x 15 cm
245 grm



4.696 | **Gin Tonic**
70 cl.
ø 10,8 x 19 cm
182 grm



4.680 | **Area 35**
35 cl.
ø 8,2 x 20 cm
125 grm



4.681 | **Area 53**
53 cl.
ø 9,1 x 21,5 cm
155 grm

EN The Professional Glasses models are glasses created for the hostelry and designed for the perfect consumption of each drink in the appropriate glass. A small selection of crystal glasses of beauty timeless and lasting quality.

FR Les modèles "professional glasses" sont des verres spécialement conçus pour la restauration : des verres destinés à la dégustation en accord avec les différents vins, champagnes ou crémants. Une sélection de verres en cristal avec une ligne intemporelle.

IT I modelli Professional Glasses sono occhiali nati per l'osteria e pensati per il consumo perfetto di ogni bevanda nell'apposito bicchiere. Una piccola selezione di bicchieri di cristallo di bellezza senza tempo e di qualità durevole.

DE Die Professional Glasses-Modelle sind Brillen, die für die Herberge entwickelt wurden und für den perfekten Verzehr konzipiert sind von jedem Getränk in das entsprechende Glas. Eine kleine Auswahl an Kristallgläsern von zeitloser und dauerhafter Schönheit.

ES Los modelos de copas Profesionales estan creadas para la hostelería y diseñadas para el perfecto consumo de cada bebida en la copa correspondiente. Una pequeña selección de copas de cristal de belleza atemporal y de calidad duradera.



High Transparency

German production systems and materials produce a high optical characteristics.

Big Base

To a high stability lever.



Light weight

Due to the production technique the cups are very light and resistance.



4.690 | **Gotta 51**
51 cl.
ø 8,3 x 20,5 cm
155 grm



4.691 | **Gotta 54**
54 cl.
ø 8,8 x 21,8 cm
155 grm



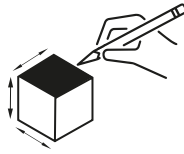
4.693 | **Brutte 17**
17 cl.
ø 6,5 x 19,5 cm
125 grm



4.684 | **Nature 22**
22 cl.
ø 6,8 x 20,5 cm
135 grm

organic crystal
nature®

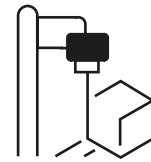
Pulltex®



TECHNICAL STUDY
EUROPE



ENGINEERING
EUROPE



PROTOTYPING
EUROPE



PRODUCTION
EUROPE 75%
ASIA 25%



QUALITY CONTROL
EUROPE



LOGISTICS & FOLLOW UP
EUROPE

Pulltex®

Present in more than 100 countries around the world



Do you want to be our partner in your country?

Get in contact with us!!!

pulltex@pulltex.com



Join for the future

PulltexFrance
Pulltex France s.a.r.l.

Distriport - B.P. 60220
66161 Le Boulou Cedex
FRANCE
Tel. (04) 68 39 00 38
Fax (04) 68 39 08 82
france@pulltex.com

PulltexItaly
D&GSelezioe s.r.l.

Via del Laghi, 36-38
53035 Monteriggioni
Siena - ITALY
Tel. (05) 77 30 46 54
Fax (05) 77 30 43 28
dgselezioe@pulltex.com
www.pulltex.it

PulltexPartner Switzerland
SWISS TRADE Group & Partner AG

Grabenackerstrasse 27
CH 8156 Oberhasli / ZH
SWITZERLAND
Tel. +41 (0) 43 355 20 10
Fax +41 (0) 43 355 20 15
info@pulltex.ch

PulltexSpain
Pulltex Locair, s.l.

Murcia 33-B P.I. Can Calderón
08830 Sant Boi de Llobregat
Barcelona - SPAIN
Tel. (34) 936 358 155
Fax (34) 936 524 760
locair@pulltex.com

Pulltex
Main Office

Murcia 33-A P.I. Can Calderón
08830 Sant Boi de Llobregat
Barcelona - SPAIN
Tel. (34) 93 640 12 45
Fax (34) 93 640 96 34
pulltex@pulltex.com

www.pulltexwt.com
www.pulltex.com

